



6" (15.24cm) Modular Power Sweep Systems

- Fits below perforated floor with Standard Flighting.
- Price **does not** include discharge heads. Discharge heads may be selected from the tables below.
- For **Preassembled** Power Sweep add "-A" to your part #, (example: 014825-A).
(**Preassembled** Power Sweep Systems include power sweep center well with internal shifting gearboxes, unloading tube, flight, bin sweep with back board, intermediate well(s), wall plate, and control rods.)

| Bin Diameter | | Power Sweep with Wheel | | Power Sweep with Walker | | Power Sweep with Reduction Wheel | | | |
|--------------|--------|------------------------|------------|-------------------------|------------|----------------------------------|------------|--------|-----|
| Feet | Meters | Part Number | List Price | Part Number | List Price | Part Number | List Price | Weight | |
| | | | | | | | | lb | kg |
| 15' | 4.572 | 014825 | | 014838 | | 046504 | | 253 | 115 |
| 18' | 5.486 | 014826 | | 014839 | | 046505 | | 281 | 128 |
| 21' | 6.401 | 014827 | | 014840 | | 046506 | | 318 | 144 |
| 24' | 7.315 | 014829 | | 014842 | | 046508 | | 326 | 148 |
| 27' | 8.23 | 014831 | | 014844 | | 046510 | | 366 | 166 |
| 30' | 9.144 | 014833 | | 014846 | | 046512 | | 389 | 177 |
| 33' | 10.06 | 014834 | | 014847 | | 046513 | | 433 | 197 |
| 36' | 10.97 | 014835 | | 014848 | | 046514 | | 439 | 199 |
| 42' | 12.8 | 014836 | | 014849 | | 046515 | | 534 | 242 |
| 48' | 14.63 | 014837 | | 014850 | | 046516 | | 588 | 267 |

Power Head and Horsepower Needed for NECO 6" Power Sweep

Select Desired Discharge Head from below. Then add that price to above Power Sweep System.

Does not include electric Motor and Motor Pulley, select from EM-1, MP-1

| 6" (15.24cm) Horizontal Requires a 3.2" (8.13cm) Motor Pulley | | | | | | | |
|--|-----------|-------|-------|---|--------|-------------|------------|
| Bin Diameter | | Power | | | Belts | Part Number | List Price |
| Feet | Meters | hp | kW | | | | |
| 15' | 4.57 | 5 | 3.728 | 1 | 047186 | | |
| 18'-28' | 5.49-8.54 | 7½ | 5.593 | 2 | 047187 | | |
| 30'-48' | 9.14-14.6 | 10 | 7.457 | 2 | 047187 | | |

| 6" (15.54cm) Fixed Angle Requires a 3.2" (8.13cm) Motor Pulley | | | | | | | |
|---|-----------|-------|-------|---|--------|-------------|------------|
| Bin Diameter | | Power | | | Belts | Part Number | List Price |
| Feet | Meters | hp | kW | | | | |
| 15' | 4.57 | 5 | 3.728 | 2 | 019751 | | |
| 18' - 28' | 5.49-8.54 | 7½ | 5.593 | 2 | 019751 | | |
| 30' - 48' | 9.14-14.6 | 10 | 7.457 | 3 | *** | | |

| 6" Variable Height (requires a 3.2" Motor Pulley) | | | | | | |
|---|-------------|-------|--------|-------|-------------|------------|
| Combined included & U-bin Auger Length | | Power | | Belts | Part Number | List Price |
| Feet | Meters | hp | kW | | | |
| Up to 10' | Up to 3.048 | 3 | 2.2370 | 2 | 048839 | |
| 11' - 31' | 3.353-9.449 | 5 | 3.7284 | 2 | 048839 | |
| 32' - 55' | 9.754-16.76 | 7½ | 5.5927 | 3 | *** | |
| 56' - 70' | 17.07-21.34 | 10 | 7.4569 | 3 | *** | |

***Contact Factory for pricing and availability.



6" (15.24cm) Modular Power Sweep Systems

(continued)

| 6" (15.54cm) Single-Drive Vertical Requires a 3.2 (8.13cm) Motor Pulley | | | | | | | | | | |
|--|------------|-------|-------|-------|------------------|--------|------------------------|------------|----------------|------------|
| Bin Diameter | | Power | | Belts | Discharge Height | | with Adjust-able Spout | List Price | with 45° Spout | List Price |
| Feet | Meters | hp | kW | | Feet | Meters | | | | |
| 15' | 4.57 | 5 | 3.728 | 2 | 13' | 3.96 | 014684 | | 014687 | |
| 18'-28' | 5.49-8.53 | 7½ | 5.593 | 3 | 16' | 4.88 | 014685 | | 014688 | |
| 30'-48' | 9.14-14.63 | 10 | 7.457 | 3 | 19' | 5.79 | 014686 | | 014689 | |

| 6" (15.24cm) Dual-Drive Vertical | | | | | | |
|---|------------|-------|-------|-------|-------------|------------|
| Horizontal hp required Requires a 3.2" (8.13cm) Motor Pulley | | | | | | |
| Bin Diameter | | Power | | Belts | Part Number | List Price |
| Feet | Meters | hp | kW | | | |
| 15' | 4.57 | 5 | 3.728 | 1 | *** | *** |
| 18'-28' | 5.49-8.53 | 7½ | 5.593 | 2 | *** | *** |
| 30'-48' | 9.14-14.63 | 10 | 7.457 | 3 | *** | *** |

| 6" (15.24cm) Dual-Drive Vertical (continued) | | | | | | |
|--|------------|-------|-------|-------|-------------|------------|
| Vertical hp required Requires a 4.5" (11.43cm) Motor Pulley | | | | | | |
| Height | | Power | | Belts | Part Number | List Price |
| Feet | Meters | hp | kW | | | |
| Up to 11' | Up to 3.35 | 1.5 | 1.491 | 2 | *** | *** |
| 13'-15' | 3.96-4.57 | 2 | 3.728 | 2 | *** | *** |
| 17'-23' | 5.18-7.01 | 3 | 5.593 | 2 | *** | *** |

***Contact Factory for pricing and availability.



POWER SWEEP

6" (15.24cm) Modular Power Sweep Underbin System

Effective: 2011-11-8
PS-3

| Part Number | Description | List Price | 15' (4.57m) | 18' (5.49m) | 21' (6.40m) | 24' (7.32m) | 27' (8.23m) | 30' (9.14m) | 33' (10.06m) | 36' (10.97m) | 42' (12.8m) | 48' (14.63m) |
|-------------|-------------------------------|------------|----------------|----------------|----------------|----------------|----------------|----------------|-----------------|-----------------|----------------|-----------------|
| 019836 | 6" x 8' Tube and Auger | | 1 | | | | | | | | | |
| 019837 | 6" x 10' Tube and Auger | | | 1 | | | | | | | 1 | |
| 019838 | 6" x 12' Tube and Auger | | | | 1 | 1 | | | | | 1 | 2 |
| 019839 | 6" x 14' Tube and Auger | | | | | | 1 | | | | | |
| 019840 | 6" x 16' Tube and Auger | | | | | | | 1 | | | | |
| 019841 | 6" x 18' Tube and Auger | | | | | | | | 1 | 1 | | |
| 019842 | 6" x 20' Tube and Auger | | | | | | | | | | | |
| 014822 | 6" Cnt Hop w/Gearboxes | | 1 | 1 | 1 | 1 | 1 | 1 | 1 | 1 | 1 | 1 |
| 019693 | 6" Intermediate Hopper | | 1 | 1 | 2 | 2 | 2 | 2 | 3 | 3 | 4 | 4 |
| 019711 | Bag of Hardware for Int Hop | | 1 | 1 | 2 | 2 | 2 | 2 | 3 | 3 | 4 | 4 |
| 047178 | 4'8" Slide Gate Control Rod | | 2 | 3 | 3 | 4 | 4 | 5 | 6 | 6 | 8 | 8 |
| 048571 | 3'4" Slide Gate Control Rod | | 1 | | 1 | | 1 | | | | | 1 |
| 047185 | 2' Slide Gate Control Rod | | | | | 1 | | | | 1 | | |
| 047181 | 1' Slide Gate Control Rod | | | | | | 1 | | 1 | 1 | 1 | 1 |
| 047180 | 6" Slide Gate Control Rod | | | | 1 | | | | 1 | 2 | 1 | |
| 014734 | 4'0" Clutch Rod | | 2 | 2 | 3 | 3 | 3 | 4 | 4 | 4 | 5 | 6 |
| 014735 | 2'0" Clutch Rod | | | 1 | | | 1 | | 1 | 1 | 1 | |
| 014974 | 6" x 6'0" Swp Ext Assy | | 1 | | | | 2 | 1 | | | | 1 |
| 014975 | 6" x 7'6" Swp Ext Assy | | | 1 | | | | 1 | 2 | 1 | | 1 |
| 014976 | 6" x 9'0" Swp Ext Assy | | | | 1 | | | | | 1 | 1 | 1 |
| 014977 | 6" x 10'6" Swp Ext Assy | | | | | 1 | | | | | 1 | |
| 046500 | Extra Splice Plate with wheel | | | | | | | | | | | 1 |
| 048055 | 6" x 6" Swp Ext. Assy | | | | | | | | | | | |
| 014970 | BOP, 6" Mod Power Sweep | | 1 | 1 | 1 | 1 | 1 | 1 | 1 | 1 | 1 | 1 |
| 046501 | Box of Parts, Wheel | | * | * | * | * | * | * | * | * | * | * |
| 014338 | Box of Parts, Walker | | ** | ** | ** | ** | ** | ** | ** | ** | ** | ** |
| 046502 | BOP, Reduction Wheel | | *** | *** | *** | *** | *** | *** | *** | *** | *** | *** |

NOTE: Discharge Head is not included and must be added along with proper motor & motor pulley(s) to complete unload system.



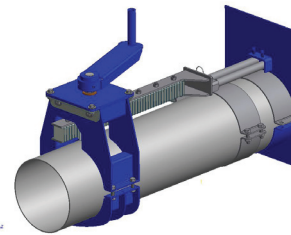
8" (20.32cm) Modular Power Sweep Systems

- Fits below perforated floor with Standard Flighting
- Price **does not** include discharge heads select from below
- For **Preassembled** Power Sweep add **-A** to your part #, **ex:(014780-A)**
(**Preassembled** includes power sweep center well with internal shifting gearboxes, unloading tube, flight, bin sweep with back board, intermediate well(s), wall plate, and control rods.)

| Bin Diameter | | Power Sweep with Wheel | | Power Sweep with Walker | | Power Sweep with Reduction Wheel | | | |
|--------------|--------|------------------------|------------|-------------------------|------------|----------------------------------|------------|--------|-----|
| Feet | Meters | Part Number | List Price | Part Number | List Price | Part Number | List Price | Weight | |
| | | | | | | | | lb | kg |
| 15' | 4.572 | 014780 | | 014851 | | 046517 | | 341 | 155 |
| 18' | 5.486 | 014792 | | 014852 | | 046518 | | 384 | 174 |
| 21' | 6.401 | 014793 | | 014853 | | 046519 | | 446 | 202 |
| 24' | 7.315 | 014794 | | 014855 | | 046521 | | 460 | 209 |
| 27' | 8.23 | 014784 | | 014857 | | 046523 | | 502 | 228 |
| 30' | 9.144 | 014785 | | 014859 | | 046525 | | 546 | 248 |
| 33' | 10.06 | 014786 | | 014860 | | 046526 | | 608 | 276 |
| 36' | 10.97 | 014787 | | 014861 | | 046527 | | 626 | 284 |
| 42' | 12.8 | 014788 | | 014862 | | 046528 | | 732 | 332 |
| 48' | 14.63 | 014789 | | 014863 | | 046529 | | 788 | 358 |
| 54' | 16.46 | N/A | N/A | 014967 | | 046544 | | 848 | 385 |
| 60' | 18.29 | N/A | N/A | 014968 | | 046545 | | 908 | 412 |

Power Head and Horsepower Needed for NECO 8" (20.32cm) Power Sweep
Select Desired Discharge Head from below. Then add that price to above Power Sweep System.

Does not include electric Motor and Motor Pulley, select from EM-1, MP-1.



| 8" (20.32cm) Fixed Angle Requires a 3.2" (8.13cm) Motor Pulley | | | | | | |
|---|------------|-------|-------|-------|-------------|------------|
| Bin Diameter | | Power | | Belts | Part Number | List Price |
| Feet | Meters | hp | kW | | | |
| 15' - 21' | 4.57-6.40 | 5 | 3.728 | 2 | 019752 | |
| 22' - 36' | 6.71-10.97 | 7½ | 5.593 | 3 | 046194 | |
| 42' - 48' | 12.8-14.63 | 10 | 7.457 | 3 | 046194 | |

- OPTION: 8" RACK & PINION**
- Add Part # 051947**
- Zinc Plated Gears**
- 2000lb of Gate Pull**
- Opens Center & Intermediate Gates**
- Easily fits on Most Existing Units**

| 8" (20.32cm) Horizontal Requires a 3.2" (8.13cm) Motor Pulley | | | | | | |
|--|-------------|-------|--------|-------|-------------|------------|
| Bin Diameter | | Power | | Belts | Part Number | List Price |
| Feet | Meters | hp | kW | | | |
| 15' - 21' | 4.57-6.40 | 5 | 3.728 | 2 | 047190 | |
| 22' - 36' | 6.71-10.97 | 7½ | 5.593 | 2 | 047190 | |
| 42' - 48' | 12.8-14.63 | 10 | 7.457 | 3 | 047191 | |
| 54' - 60' | 16.46-18.29 | 15 | 11.185 | 4 | 047839 | |



8" (20.32cm) Modular Power Sweep Systems (continued)

| 8" (20.32cm) Variable Height Requires a 3.2 (8.13cm) Motor Pulley | | | | | | |
|--|-------------|-------|-------|-------|----------------|---------------|
| Combined Inclined & U-Bin Auger Length | | Power | | Belts | Part Number | List Price |
| Feet | Meters | hp | kW | | | |
| Up to 10' | Up to 3.048 | 5 | 3.728 | 2 | 047934 | |
| 11' - 31' | 3.35-9.45 | 7½ | 5.593 | 2 | 047934 | |
| 32' - 55' | 9.75-16.76 | 10 | 7.457 | 3 | 048886 | |

| 8" (20.32cm) Single-Drive Vertical Requires a 3.2" (3.18cm) Motor Pulley | | | | | | | | | | |
|---|-------------|-------|--------|-------|---------------------|--------|-----------------------------|---------------|----------------------|---------------|
| Bin Diameter | | Power | | Belts | Discharge Height | | with Adjustable Spout | List Price | with 45° Spout | List Price |
| Feet | Meters | hp | kW | | Feet | Meters | | | | |
| 15' - 21' | 4.57-6.40 | 7½ | 5.593 | 3 | 13' | 3.962 | 014690 | | 014693 | |
| 22' - 36' | 6.71-10.97 | 10 | 7.457 | 3 | 16' | 4.877 | 014691 | | 014694 | |
| 42' - 48' | 12.8-14.63 | 15 | 11.185 | 4 | 19' | 5.791 | 014692 | | 014695 | |
| 54' - 60' | 16.46-18.29 | N/A | N/A | N/A | N/A | N/A | N/A | | N/A | N/A |

| 8" (20.32cm) Dual-Drive Vertical Horizontal hp required Requires a 3.2" (8.13cm) Motor Pulley | | | | | | |
|---|-------------|-------|-------|-------|----------------|------------|
| Bin Diameter | | Power | | Belts | Part Number | List Price |
| Feet | Meters | hp | kW | | | |
| 15' | 4.572 | 3 | 2.237 | 2 | *** | *** |
| 18' - 28' | 5.49-8.53 | 5 | 3.728 | 2 | *** | *** |
| 30' - 48' | 9.14-14.63 | 7½ | 5.593 | 3 | *** | *** |
| 54' - 60' | 16.46-18.29 | 10 | 7.457 | 3 | *** | *** |

| 8" (20.32cm) Dual-Drive Vertical Vertical hp required Requires a 4.5" (11.43) Motor Pulley | | | | | | |
|--|---------------|-------|-------|-------|----------------|------------|
| Height | | Power | | Belts | Part Number | List Price |
| Feet | Meters | hp | kW | | | |
| Up to 11' | Up to 3.35 | 3 | 2.237 | 2 | *** | *** |
| 13' - 15' | 3.96-4.57 | 5 | 2.237 | 2 | *** | *** |
| 17' - 23' | 5.18-7.01 | 7.5 | 3.728 | 3 | *** | *** |
| ***Contact factory for pricing and availability | | | | | | |



POWER SWEEP

Effective: 2011-11-8
PS-6

8" (20.32cm) Modular Power Sweep Underbin System

| Part Number | Description | List Price | 15' (4.57m) | 18' (5.486m) | 21' (6.40m) | 24' (7.32m) | 27' (8.23m) | 30' (9.14m) | 33' (10.06m) | 36' (10.97m) | 42' (12.8m) | 48' (14.63m) |
|-------------|-----------------------------|------------|----------------|-----------------|----------------|----------------|----------------|----------------|-----------------|-----------------|----------------|-----------------|
| 019825 | 8" x 8' Tube and Auger | | 1 | | | | | | | | | |
| 019826 | 8" x 10' Tube and Auger | | | 1 | | | | | | | 1 | |
| 019827 | 8" x 12' Tube and Auger | | | | 1 | 1 | | | | | 1 | 2 |
| 019828 | 8" x 14' Tube and Auger | | | | | | 1 | | | | | |
| 019829 | 8" x 16' Tube and Auger | | | | | | | 1 | | | | |
| 019830 | 8" x 18' Tube and Auger | | | | | | | | 1 | 1 | | |
| 019831 | 8" x 20' Tube and Auger | | | | | | | | | | | |
| 014755 | 8" Cnt Hop w/Gearboxes | | 1 | 1 | 1 | 1 | 1 | 1 | 1 | 1 | 1 | 1 |
| 019698 | 8" Intermediate Hopper | | 1 | 1 | 2 | 2 | 2 | 2 | 3 | 3 | 4 | 4 |
| 019711 | Bag of Hdwr. for Int Hop | | 1 | 1 | 2 | 2 | 2 | 2 | 3 | 3 | 4 | 4 |
| 047178 | 4"8" Slide Gate Control Rod | | 2 | 2 | 3 | 4 | 3 | 5 | 6 | 6 | 7 | 8 |
| 048571 | 3"4" Slide Gate Control Rod | | 1 | 1 | 1 | | 2 | | | | 1 | 1 |
| 047185 | 2' Slide Gate Control Rod | | | | | | | | | 1 | 1 | |
| 047181 | 1' Slide Gate Control Rod | | | | 1 | 1 | 1 | | 1 | 1 | | 1 |
| 047180 | 6" Slide Gate Control Rod | | | | 1 | 1 | | | 1 | 2 | 1 | |
| 014734 | 4"0" Clutch Rod | | 2 | 2 | 3 | 3 | 3 | 4 | 4 | 4 | 5 | 6 |
| 014735 | 2"0" Clutch Rod | | | 1 | | | 1 | | 1 | 1 | 1 | |
| 014954 | 8" x 6"0" Swp Ext Assy | | 1 | | | | 2 | 1 | | | | 1 |
| 014953 | 8" x 7"6" Swp Ext Assy | | | 1 | | | 1 | 1 | 2 | 1 | 1 | 1 |
| 014952 | 8" x 9"0" Swp Ext Assy | | | | 1 | | | | | 1 | 1 | 1 |
| 014951 | 8" x 10"6" Swp Ext Assy | | | | | 1 | | | | | 1 | |
| 046500 | Extra Splice Plate w/ Whl. | | | | | | | | | | | 1 |
| 048064 | 8" x 6" Swp Ext. Assy | | | | | | | | | | | |
| 014969 | BOP, 8" Mod PowerSweep | | 1 | 1 | 1 | 1 | 1 | 1 | 1 | 1 | 1 | 1 |
| 046501 | BOP, Wheel | | * | * | * | * | * | * | * | * | * | * |
| 014338 | BOP, Walker | | ** | ** | ** | ** | ** | ** | ** | ** | ** | ** |
| 046502 | BOP, Red. Wheel | | *** | *** | *** | *** | *** | *** | *** | *** | *** | *** |

*Discharge Head is not included and must be added along with proper motor & motor pulley(s) to complete unload system.



8" (20.32cm) Modular Power Sweep Bill of Lading Items for 54' (16.46m) and 60' (18.29m) Diameter Bins

| Part Number | Description | Weight (each) | | List Price (each) | 54' (16.46m) | 60' (18.29m) |
|-------------|--|---------------|-----|-------------------|-----------------|-----------------|
| | | lb | kg | | | |
| 019827 | 8" x 12' (20.32cm x 3.66m) Tube & Auger with Connector | 176 | 80 | | 1 | - |
| 019828 | 8" x 14' (20.32cm x 4.27m) Tube & Auger with Connector | 205 | 93 | | - | 1 |
| 019829 | 8" x 16' (20.32cm x 4.88m) Tube & Auger with Connector | 234 | 107 | | 1 | 1 |
| 014966 | 8" (20.32cm) Heavy-duty Center Hopper with Gear Boxes | 150 | 69 | | 1 | 1 |
| 019698 | 8" (20.32cm) Intermediate Hopper | 12 | 5½ | | 5 | 6 |
| 019711 | Bag of Hardware (BOH) for Intermediate Hopper | 1 | ½ | | 5 | 6 |
| 047178 | 4'8" (1.422m) Slide Gate Control Rod | 4 | 2 | | 10 | 12 |
| 048571 | 3'4" (1.016m) Slide Gate Control Rod | 3 | 1½ | | 1 | - |
| 047181 | 1' (30.48cm) Slide Gate Control Rod | 1 | ½ | | - | 1 |
| 014734 | 4'0" (1.219m) Clutch Rod | 2 | 1 | | 7 | 7 |
| 014735 | 2'0" (0.610m) Clutch Rod | 1 | ½ | | - | 1 |
| 014953 | 8" x 7'6" (20.32cm x 2.286m) Sweep External Assembly | 60 | 28 | | 1 | 1 |
| 014952 | 8" x 9'0" (20.32cm x 2.743m) Sweep External Assembly | 75 | 34 | | 2 | - |
| 014951 | 8" x 10'6" (20.32cm x 3.2m) Sweep External Assembly | 85 | 39 | | - | 2 |
| 046500 | Box of Parts, Splice plate for | 40 | 19 | | 1 | 1 |
| 014969 | Box of Parts, 8" (20.32cm) Modular Power Sweep | - | - | | 1 | 1 |
| 014338 | Box of Parts, Walker | - | - | | * | * |

* As required for MPS system with Walker or with reduction wheel.

Update Kit: Part Number 046500

- Heavy-duty splice plate and support wheel to reinforce multiple sweep extensions.
- Prior to 2007 order one per extension connection 30' - 78' (9.144-23.77m) bin diameter.
- After 2007 order one per extension connection 30' - 42' (9.144-12.8m) bin diameter.

Manufactured by



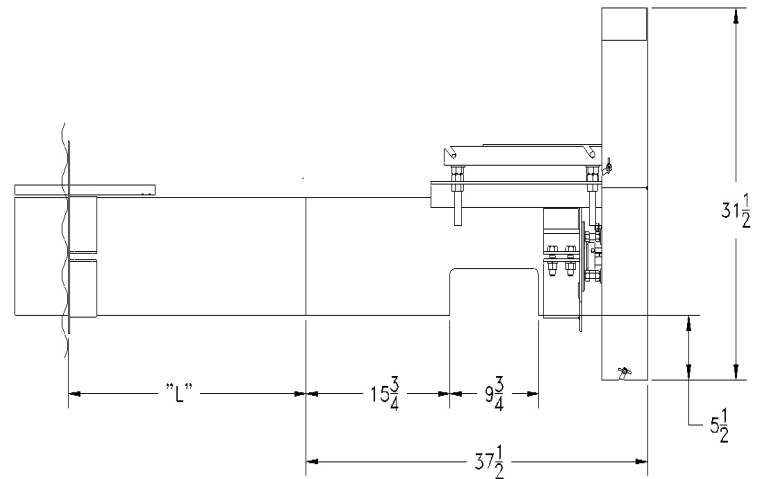
Division of GLOBAL Industries, Inc.
9364 North 45th Street
Omaha, Nebraska 68152



IMPROVED 10" (25.4cm) Modular Power Sweep Systems

- **LARGER CENTER WELL** with 16" x 20" gate opening
- Rack and pinion rated for 2100lbs is standard
- Tapered shaft on gearbox allows installation of auger from outside the bin
- Teeth on grate remove debris from center hopper grating
- Tapered hopper for improved grain flow when running the sweep
- Fits below perforated floor with Standard Flighting
- **Price does not include discharge heads select from below or Reduction Wheel or sweep Walker.**
- **Preassembled** Power Sweep-(**Preassembled** includes power sweep center well with internal shifting gear-boxes, unloading tube, flight, bin sweep with back board, intermediate well(s), wall plate, and control rods.)

| Bin Diameter | | PRE-ASSEMBLED PowerSweep | | "L" |
|--------------|--------|--------------------------|------------|-------------|
| Feet | Meters | Part Number | List Price | Dim. inches |
| 18' | 5.486 | 051850-A | | 37 |
| 21' | 6.401 | 051851-A | | 43 |
| 24' | 7.315 | 051852-A | | 25 |
| 27' | 8.23 | 051853-A | | 31 |
| 30' | 9.144 | 051854-A | | 38 |
| 33' | 10.05 | 051855-A | | 44 |
| 36' | 10.97 | 051856-A | | 26 |
| 39' | 11.89 | 051857-A | | 32 |
| 42' | 12.8 | 051858-A | | 38 |
| 48' | 14.63 | 051859-A | | 26 |
| 54' | 16.46 | 051860-A | | 38 |
| 60' | 18.29 | 051861-A | | 26 |



| Optional Reduction Wheel or Sweep Walker | | List Price |
|--|--------|------------|
| Sweep Walker | 054563 | |
| Reduction Wheel | 046502 | |

| Following Bins sizes Need 2' Ext. on U/B for Variable and Fixed Angle Discharge | |
|---|-----|
| 24' | 48' |
| 36' | 60' |

Power Head and Horsepower Required for NECO 10" (25.4cm) Power Sweep

Select Desired Discharge Head from below. Then add that price to above Power Sweep System.

Does not include electric Motor and Motor Pulley, select from EM-1, MP-1.

| 10" (25.4cm) Horizontal Requires a 3.2" (8.13cm) Motor Pulley | | | | | | |
|--|-------------|-------|--------|-------|-------------|------------|
| Bin Diameter | | Power | | Belts | Part Number | List Price |
| Feet | Meters | hp | kW | | | |
| 18' to 30' | 5.49-9.14 | 7½ | 5.593 | 3 | 047194 | |
| 31' to 42' | 9.45-12.8 | 10 | 7.457 | 3 | 047194 | |
| 43' to 60' | 13.11-18.29 | 15 | 11.185 | 4 | 047195 | |

*Discharge Head with 3051 Speed Reducer



10" (25.4cm) Modular Power Sweep Systems (Continued)

| 10" (25.4cm) Fixed Angle Requires a 3.2" (8.13cm) Motor Pulley | | | | | | |
|---|-------------|-------|--------|-------|-------------|------------|
| Bin Diameter | | Power | | Belts | Part Number | List Price |
| Feet | Meters | hp | kW | | | |
| 18' to 24' | 5.486-7.315 | 7½ | 5.593 | 3 | 019753 | |
| 25' to 34' | 7.62-10.36 | 10 | 7.457 | 3 | 019754 | |
| 35' to 56' | 10.67-17.07 | 15 | 11.185 | 4 | 046920 | |

| 10" (25.4cm) Variable Height Requires a 3.2" (8.13cm) Motor Pulley (Price does NOT include Auger extension) | | | | | | |
|---|-------------|-------|--------|-------|-------------|------------|
| Combined inclined & U-bin Auger Length | | Power | | Belts | Part Number | List Price |
| Feet | Meters | hp | kW | | | |
| Up to 18' | Up to 5.49 | 7½ | 5.593 | 3 | 048803 | |
| 19' to 23' | 5.791-7.01 | 10 | 7.457 | 3 | 048803 | |
| 24' to 34' | 7.32-10.36 | 15 | 11.185 | 4 | 046917 | |
| 35' to 45' | 10.67-13.72 | 20 | 14.914 | 3* | *** | *** |

| 10" (25.4cm) Dual-Drive Vertical | | | | | | |
|---|-------------|-------|--------|-------|-------------|------------|
| Horizontal hp required Requires a 3.2" (8.13cm) Motor Pulley | | | | | | |
| Bin Diameter | | Power | | Belts | Part Number | List Price |
| Feet | Meters | hp | kW | | | |
| 18' to 30' | 5.49-9.14 | 7½ | 5.593 | 3 | *** | *** |
| 31' to 42' | 9.45-12.8 | 10 | 7.457 | 3 | *** | *** |
| 43' to 60' | 13.11-18.29 | 15 | 11.185 | 4 | *** | *** |

| 10" (25.4cm) Dual-Drive Vertical | | | | | | |
|--|------------|-------|-------|-------|-------------|------------|
| Vertical hp required Requires a 4.5" (11.43cm) Motor Pulley | | | | | | |
| Height | | Power | | Belts | Part Number | List Price |
| Feet | Meters | hp | kW | | | |
| Up to 11' | Up to 3.35 | 5 | 2.237 | 3 | *** | *** |
| 13' to 15' | 3.96-4.57 | 7.5 | 3.728 | 3 | *** | *** |
| 17' to 23' | 5.18-7.01 | 10 | 5.593 | 3 | *** | *** |

*Discharge Head with 3051 Speed Reducer

***Contact Factory for Pricing, Availability, and Part Numbers



POWER SWEEP

Effective: 2011-11-8
PS-10

10" (25.4cm) Modular Power Sweep Underbin System

| Part Number | Description | List Price | 18' 5.49m | 21' 6.40m | 24' 7.32m | 27' 8.23m | 30' 9.14m | 33' 10.05m | 36' 10.97m | 39' 11.89m | 42' 12.8m | 48' 14.63m | 54' 16.46m | 60' 18.29m |
|-------------|----------------------------|------------|--------------|--------------|--------------|--------------|--------------|---------------|---------------|---------------|--------------|---------------|---------------|---------------|
| 019844 | 10" x 10' Tube and Auger | | 1 | | | | | | | | 1 | | | |
| 019845 | 10" x 12' Tube and Auger | | | 1 | 1 | | | | | | 1 | 2 | 1 | |
| 019846 | 10" x 14' Tube and Auger | | | | | 1 | | | | | | | | 1 |
| 019847 | 10" x 16' Tube and Auger | | | | | | 1 | | | | | | 1 | 1 |
| 019848 | 10" x 18' Tube and Auger | | | | | | | 1 | 1 | | | | | |
| 019849 | 10" x 20' Tube and Auger | | | | | | | | | 1 | | | | |
| 047178 | Control Rod 4'8" | | 1 | 1 | 2 | 3 | 3 | 4 | 6 | 6 | 7 | 8 | 11 | 11 |
| 048571 | Control Rod 3'4" | | | 1 | | | 1 | | | 1 | | | 1 | |
| 051687 | Control Rod 3' | | 2 | 1 | 1 | 1 | 1 | 1 | 2 | 2 | 2 | 2 | 2 | 2 |
| 047185 | Control Rod 2' | | | | | 1 | | | 1 | | | 1 | 1 | 3 |
| 047181 | Control Rod 1' | | | 1 | 1 | | 1 | 1 | | | | 1 | 1 | 3 |
| 047180 | Control Rod 6" | | | | | | | | 1 | 1 | 1 | 2 | 1 | |
| 014734 | Clutch Rod 4' | | 2 | 3 | 3 | 3 | 4 | 4 | 4 | 5 | 5 | 6 | 7 | 7 |
| 014735 | Control Rod 2' | | 1 | | | 1 | | | 1 | | 1 | | | 1 |
| 046125 | 10" Intermediate Hopper | | 1 | 1 | 1 | 2 | 2 | 2 | 3 | 3 | 3 | 4 | 5 | 5 |
| 014876 | Wall Plate 10" MPS | | 1 | 1 | 1 | 1 | 1 | 1 | 1 | 1 | 1 | 1 | 1 | 1 |
| 051639 | 10" MPS Center Hopper Assm | | 1 | 1 | 1 | 1 | 1 | 1 | 1 | 1 | 1 | 1 | 1 | 1 |
| 051662 | 10" Slide Gate Cover | | 1 | 1 | 1 | 1 | 1 | 1 | 1 | 1 | 1 | 1 | 1 | 1 |
| 051665 | 10" Hopper Grating' | | 1 | 1 | 1 | 1 | 1 | 1 | 1 | 1 | 1 | 1 | 1 | 1 |
| 051677 | 10" Slide Gate | | 1 | 1 | 1 | 1 | 1 | 1 | 1 | 1 | 1 | 1 | 1 | 1 |
| 051686 | Hopper Front Flashing | | 1 | 1 | 1 | 1 | 1 | 1 | 1 | 1 | 1 | 1 | 1 | 1 |
| 051688 | Hopper Left Flashing | | 1 | 1 | 1 | 1 | 1 | 1 | 1 | 1 | 1 | 1 | 1 | 1 |
| 051689 | Hopper Right Flashing | | 1 | 1 | 1 | 1 | 1 | 1 | 1 | 1 | 1 | 1 | 1 | 1 |
| 051726 | 10" Side Drag Angle Brkt | | 1 | 1 | 1 | 1 | 1 | 1 | 1 | 1 | 1 | 1 | 1 | 1 |
| 051727 | 10" Top Drag Angle Brkt | | 1 | 1 | 1 | 1 | 1 | 1 | 1 | 1 | 1 | 1 | 1 | 1 |
| 051706 | 10" Rack and Pinion BOP | | 1 | 1 | 1 | 1 | 1 | 1 | 1 | 1 | 1 | 1 | 1 | 1 |
| 051649 | 10" MPS Common BOP | | 1 | 1 | 1 | 1 | 1 | 1 | 1 | 1 | 1 | 1 | 1 | 1 |
| 051650 | 10" Sweep Extension BOP | | | | | | 1 | 1 | 1 | 1 | 1 | 1 | 2 | 2 |
| 051798 | 10" Sweep Auger 141" | | | | | 1 | | | | | | 1 | | |



POWER SWEEP

10" Modular Power Sweep Underbin System

(Continued)

Effective: 2011-11-8
PS-11

| Part Number | Description | List Price | 18' 5.49m | 21' 6.40m | 24' 7.32m | 27' 8.23m | 30' 9.14m | 33' 10.05m | 36' 10.97m | 39' 11.89m | 42' 12.8m | 48' 14.63m | 54' 16.46m | 60' 18.29m |
|-------------|-----------------------------|------------|--------------|--------------|--------------|--------------|--------------|---------------|---------------|---------------|--------------|---------------|---------------|---------------|
| 051799 | 10" Sweep Auger 123" | | | | 1 | | | | | | 1 | 1 | | |
| 051802 | 10" Sweep Auger 114" | | | | | | | | | | | | | 2 |
| 051803 | 10" Sweep Auger 105" | | 1 | | | | | | 1 | 2 | 1 | | 2 | 1 |
| 051804 | 10" Sweep Auger 87" | | | | | | 1 | 2 | 1 | | | | 1 | |
| 051805 | 10" Sweep Auger 69" | | | | | | 1 | | | | | | | |
| 051811 | 10" Inside Drag Angle 141" | | | | | 1 | | | | | | 1 | | |
| 051812 | 10" Inside Drag Angle 123" | | | | 1 | | | | | | 1 | | | |
| 051813 | 10" Inside Drag Angle 105" | | | 1 | | | | | 1 | 1 | | | | 1 |
| 051814 | 10" Inside Drag Angle 87" | | 1 | | | | | 1 | | | | | 1 | |
| 051815 | 10" Inside Drag Angle 69" | | | | | | 1 | | | | | | | |
| 051820 | 10" Outside Drag Angle 123" | | | | | | | | | | | 1 | | |
| 051821 | 10" Outside Drag Angle 114" | | | | | | | | | | | | | 2 |
| 051822 | 10" Outside Drag Angle 105" | | | | | | | | | 1 | 1 | | 2 | |
| 051823 | 10" Outside Drag Angle 87" | | | | | | 1 | 1 | 1 | | | | | |



12" (30.48cm) Modular Power Sweep Systems

- Requires 17.5" (44.45cm) Floor Supports
- Price **does not** include discharge heads select from below
- For **PREASSEMBLED** Power Sweep add A to your part #, ex:(046827A)
(Preassembled includes power sweep center well with internal shifting gearboxes, unloading tube, flight, bin sweep with back board, intermediate well(s), wall plate, and control rods.)

| Bin Diameter | | PowerSweep with walker | | PowerSweep with reduction wheel | |
|--------------|--------|------------------------|------------|---------------------------------|------------|
| Feet | Meters | Part Number | List Price | Part Number | List Price |
| 30' | 9.144 | 046827 | | 046834 | |
| 36' | 10.97 | 046829 | | 046836 | |
| 42' | 12.8 | 046831 | | 046838 | |
| 48' | 14.63 | 046748 | | 046839 | |
| 54' | 16.46 | 046832 | | 046625 | |
| 60' | 18.59 | 046833 | | 046840 | |

Powerhead and Horsepower Requirements for the NECO 12" Power Sweep

Select the desired Discharge Head from below. Then add that price to above Power Sweep System.
Does not include electric Motor and Motor Pulley, select from EM-1, MP-1.

| 12" (30.48cm) Horizontal Requires a 3.2" (8.13cm) Motor Pulley | | | | | | |
|---|-------------|-------|--------|-------|-------------|------------|
| Bin Diameter | | Power | | Belts | Part Number | List Price |
| Feet | Meters | hp | kW | | | |
| 30' to 33' | 9.14-10.06 | 10 | 7.457 | 3 | 047197 | |
| 34' to 48' | 10.36-14.63 | 15 | 11.185 | 4 | 047198 | |
| 49' to 60' | 14.91-18.29 | 20 | 14.914 | 3* | 047200 | |

| 12" (30.48cm) Fixed Angle Requires a 3.2" (8.13 cm) Motor Pulley | | | | | | |
|---|-------------|-------|--------|-------|-------------|------------|
| Bin Diameter | | Power | | Belts | Part Number | List Price |
| Feet | Meters | hp | kW | | | |
| 30' to 42' | 9.14-12.8 | 15 | 11.185 | 4 | 019757 | |
| 43' to 54' | 13.11-16.46 | 20 | 14.914 | 3* | 046176 | |
| 55' to 60' | 17.07-18.29 | 25 | 18.64 | 3* | **** | **** |

* Discharge Head with 3051 Reducer)

**** Contact NECO Factory for Pricing and Availability.



10'' (25.40cm) U-Trough Power Sweep Systems

All systems are fully assembled trough units including the assembled sweep with Reduction Wheel Drive.

NOTE: This unit can be split at the midpoint-flange for easy handling

| | Bin Size | | Part Number | Power Needed | | Belts Needed | List Price |
|---------------------------|----------|--------|-------------|--------------|-----|--------------|------------|
| | Feet | Meters | | hp | kW | | |
| Horizontal Discharge Head | 30' | 9.14 | 051870-A | 7½ | 5.5 | 2 | |
| | 33' | 10.06 | 051871-A | 7½ | 5.5 | 2 | |
| | 36' | 10.97 | 051872-A | 10 | 7.5 | 3 | |
| | 39' | 11.89 | 051873-A | 10 | 7.5 | 3 | |
| | 42' | 12.8 | 051874-A | 10 | 7.5 | 3 | |
| | 48' | 14.63 | 051875-A | 10 | 7.5 | 3 | |
| | 54' | 16.46 | 051876-A | 15 | 11 | 3 | |
| | 60' | 18.29 | 051877-A | 15 | 11 | 3 | |

| | Bin Size | | Part Number | Power Needed | | Belts Needed | List Price |
|-------------------|----------|--------|-------------|--------------|-----|--------------|------------|
| | Feet | Meters | | hp | kW | | |
| 25°Discharge Head | 30' | 9.14 | 051880-A | 10 | 7.5 | 3 | |
| | 33' | 10.06 | 051881-A | 10 | 7.5 | 3 | |
| | 36' | 10.97 | 051882-A | 15 | 11 | 3 | |
| | 39' | 11.89 | 051883-A | 15 | 11 | 3 | |
| | 42' | 12.8 | 051884-A | 15 | 11 | 3 | |
| | 48' | 14.63 | 051885-A | 15 | 11 | 3 | |
| | 54' | 16.46 | 051886-A | 20 | 15 | 3 | |
| | 60' | 18.29 | 051887-A | 20 | 15 | 3 | |

Motor pulleys for 6000 BPH to 6500 BPH capacity, 435 RPM

For 7½ hp use

3.4" pulley 2-groove "SH" 7714731 with 1 ¾" Bore "SH" Bushing 036469

For 10 hp use

3.4" pulley 3-groove "SH" 23342 with 1 ¾" Bore "SH" Bushing 036469

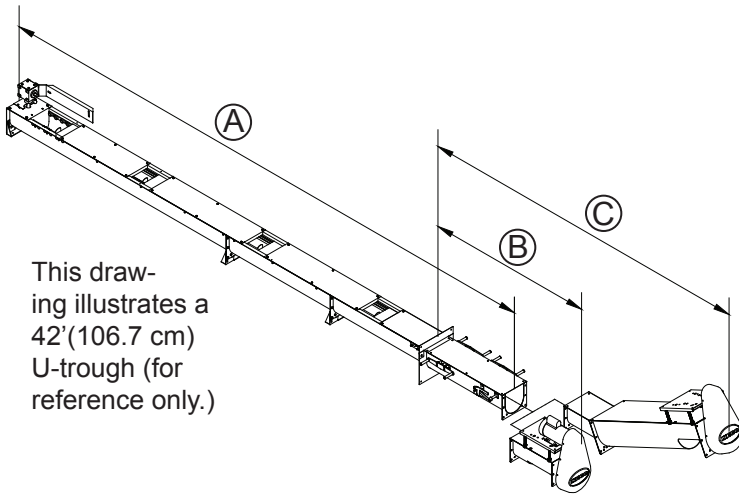
For 15 hp to 20 hp use

4.6" pulley 3-groove "SD" 036474 with 1 ⅝" Bore "SD" Bushing 036203



10" (25.40cm) U-Trough Power Sweep (Continued)

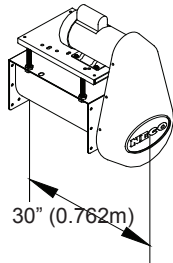
| Bin Size | | Total Length Underbin Only "A" | | Number of Gates | Length from nearest gate to bin wall | | Length from Bin wall to Belt Shield "B" | | Length from Bin wall to Belt Shield "C" | |
|----------|--------|--------------------------------|--------|-----------------|--------------------------------------|-------------|---|-------------|---|-------------|
| Feet | Meters | Feet / Inches | Meters | | Inches | cm | Inches | cm | Inches | cm |
| 30' | 9.14 | 18' 11½" | 5.778 | 3 | 31-33 | 78.74-83.82 | 73½-75½ | 186.7-191.8 | 125½-127½ | 318.8-323.8 |
| 33' | 10.06 | 20' 11½" | 6.388 | 3 | 25½-27 | 64.77-68.58 | 80-81 | 203.2-205.7 | 132-133 | 335.3-337.8 |
| 36' | 10.97 | 22' 5½" | 6.845 | 4 | 25½-27 | 64.77-68.58 | 74-75½ | 188-191.8 | 126-128½ | 320-326.4 |
| 39' | 11.89 | 23' 7½" | 7.201 | 4 | 31-32½ | 78.74-82.55 | 66½-68 | 168.9-172.7 | 118½-120 | 301-304.8 |
| 42' | 12.8 | 25' 4½" | 7.734 | 4 | 26-28 | 66.04-71.12 | 79-80½ | 200.7-204.5 | 131-132½ | 332.7-336.5 |
| 48' | 14.63 | 28' | 8.534 | 5 | 30½-32½ | 77.47-82.55 | 74-77 | 188-195.6 | 126-128 | 320-325.1 |
| 54' | 16.46 | 31' 6" | 9.601 | 5 | 24-26½ | 60.96-67.31 | 80-82 | 203.2-208.3 | 132-134 | 335.3-340.4 |
| 60' | 18.29 | 34' 5" | 10.49 | 6 | 25-27½ | 63.5-69.85 | 74-81½ | 188-207 | 126-133½ | 320-339.1 |



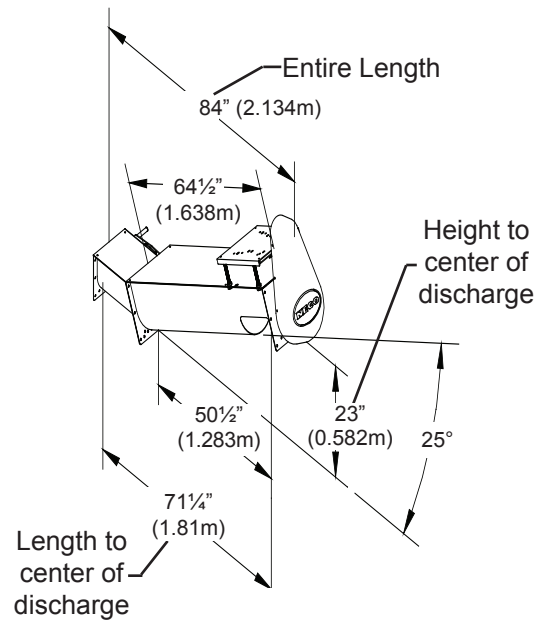
The U-Trough Power Sweep's dimensions vary depending on trough size and extensions requested.



U-Trough Power Sweep without Discharge



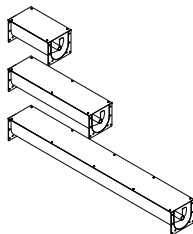
Horizontal Discharge Dimensions



25° Discharge Dimensions

U-Trough Power Sweep Extensions

- Extensions for the U-Trough Power Sweep attach to the U-trough on the outside of the bin.
- Extensions are ordered separate from the U-Trough Power Sweep and must be assembled on site.
- Please contact the NECO factory for horsepower requirements for extensions.



| Extension Length | | Part Number | List Price |
|------------------|--------|-------------|------------|
| Feet | Meters | | |
| 2' | 0.6096 | 051028 | |
| 4' | 1.219 | 051029 | |
| 6' | 1.829 | 051030 | |
| 8' | 2.438 | 051031 | |
| 10' | 3.048 | 051032 | |



POWER SWEEP

Effective: 2011-11-8
PS-16

This page is intentionally left blank.



POWER SWEEP

Effective: 2011-11-8
PS-17



Division of GLOBAL Industries, Inc.
9364 North 45th Street
Omaha, Nebraska 68152

PS-17