



SUGGESTED LIST PRICES

Axial Fans "Premium Series" (3500 RPM)

PRODUCT FEATURES

Housing is constructed of G-90 galvanized steel.

- All units are equipped with agricultural-duty motors.
- 24" & 28" [61cm & 71cm] fans are equipped with cable brackets for hanging-type installations.
- 24" & 28" [61cm & 71cm] single-phase fans and controls are equipped with 120 volt receptacles for connection with axial heaters.
- All models are equipped with handles for easy maneuverability.
- 16", 18", 24", & 28" (41cm, 46cm, 61cm, & 71cm) models are equipped with PAG composite impellers.

NOTE: All fans come from the factory designed to push air through the grain. All dual voltage fans are wired in the factory for low voltage! If a high-voltage operation is desired, the end customer must change the wiring within the junction box. See the motor wiring diagram.

								Without Controls		With Controls	
Fan Diameter		Power		Phase	Voltage	Weight		Part Number	List Price	Part Number	List Price
inches	cm	hp	kW			lb	kg				
12"	30.48	¾	0.56	1	115/230	57	26	04AF2081		-	-
12"	30.48	¾	0.56	3	230/460	52	24	04AF2083		-	-
14"	35.56	1	0.75	1	115/230	65	29	04AF4101		-	-
14"	35.56	1	0.75	3	230/460	62	28	04AF4103		-	-
16"	40.64	1½	1.12	1	230	80	36	04AF6151		-	-
16"	40.64	1½	1.12	3	230/460	68	31	04AF6153		-	-
18"	45.72	3	2.24	1	230	100	45	04AF8301		04AS8301	
18"	45.72	3	2.24	3	230/460	90	41	04AF8303		-	
18"	45.72	3	2.24	3	230	107	49	-		04AS8303	
18"	45.72	3	2.24	3	460	112	51	-		04AS830A	
24"	60.96	5 - 7	3.73-5.22	1	230	238	108	04AF4501		04AC4501	
24"	60.96	5 - 7	3.73-5.22	3	230/460	207	94	04AF4503		-	
24"	60.96	5 - 7	3.73-5.22	3	230	229	104	-		04AC4503	
24"	60.96	5 - 7	3.73-5.22	3	460	234	106	-		04AC450A	
24"	60.96	7½ - 10	5.6-7.46	1	230	258	117	04AF4751		04AC4751	
24"	60.96	7½ - 10	5.6-7.46	3	230/460	230	104	04AF4753		-	
24"	60.96	7½ - 10	5.6-7.46	3	230	252	114	-		04AC4753	
24"	60.96	7½ - 10	5.6-7.46	3	460	257	117	-		04AC475A	
28"	71.12	10-15	7.46-11.19	1	230	328	149	04AF8101		04AC8101	
28"	71.12	10-15	7.46-11.19	3	230/460	283	128	04AF8103		-	
28"	71.12	10-15	7.46-11.19	3	230	303	137	-		04AC8103	
28"	71.12	10-15	7.46-11.19	3	460	308	140	-		04AC810A	

•12" and 14" single-phase axial fans come prewired with 120V - 36" [91.44cm] cords.

Manufactured by





SUGGESTED LIST PRICES

Axial Flow Heaters

24" & 28" [60.96cm & 71.12cm] High Temperature

NECO AXIAL HEATER FEATURES

- Housing is constructed of G-90 galvanized steel for long life and good looks.
- Heater includes G-90 galvanized flame spreader for long life.
- Modern Venturi design premixes gas and air for maximum efficiency.
- Extra-heavy cast-iron Venturi tube supports burner while providing maximum efficiency.
- Includes a sealed microprocessor-controlled ignition module with a 14,000 volt Honeywell spark generator.
- Heater includes a heavy-duty ignitor.
- Sturdy ASCO gas valves with NEMA 4X coils are built to endure extreme outdoor conditions.
- Direct plug-in* to the NECO fan simplifies wiring and ensures safe shutdown of the heater if the fan is shut off.
- Control box is weatherproof.
- Electrical conduits throughout the unit are liquid-tight.
- Units are completely plumbed and wired for connection to the fan and to the gas line.
- Two special drip leg strainers keep fuel impurities out of valves.
- The large access door facilitates easy maintenance.
- Two special view ports make flame inspection easy.
- Seven straightening vanes ensure effective airflow through the burner.
- High temperature safety limit switch is standard, LP models equipped with additionalk vaporizer high limit switch.
- An easily-adjustable vaporizer is provided on the LP models.
- Heater is equipped with cable brackets for hanging-type installations.

NOTE: If a thermostat is required, please order from page F-14.

*Standard models may require hard wiring.

Part Number	List Price	Diameter		Description	Weight	
		inches	cm		lb	kg
04HC24NGV		24"	60.96	Axial Heater - Natural gas	222	101
04HC24LPV		24"	60.96	Axial Heater - LPG with vaporizer	246	112
04HL24NGV		24"	60.96	Axial High-Low Heater - Natural gas	230	104
04HL24LPV		24"	60.96	Axial High-Low Heater - LPG with vaporizer	252	114
04MV24LPV		24"	60.96	Axial Modulating-Valve Heater - LPG with vaporizer	256	116
04HC28NGV		28"	71.12	Axial Heater - Natural gas	244	111
04HC28LPV		28"	71.12	Axial Heater - LPG with vaporizer	270	122
04HL28NGV		28"	71.12	Axial High-Low Heater - Natural gas	252	114
04HL28LPV		28"	71.12	Axial High-Low Heater - LPG with vaporizer	278	126
04MV28LPV		28"	71.12	Axial Modulating-Valve Heater - LPG with vaporizer	280	127
04HC24VPV		24"	60.96	Axial Heater - Vapor propane fuel	222	101
04HC28VPV		28"	71.12	Axial Heater - Vapor propane fuel	244	111

Prices are FOB NECO factory and are subject to change without notice.

Division of GLOBAL Industries, Inc.
 9364 N. 45th Street - Omaha, NE 68152
 Phone (402) 453-6912
 www.necousa.com

Manufactured by





SUGGESTED LIST PRICES

Centrifugal Fans

Galvanized 1750 rpm

Product Features

- Housing is constructed of G-90 galvanized steel.
- Bolted design eliminates welded seams.
- Slots for lifting hooks are included for ease of installation.
- Fan wheels are constructed with dynamically-balanced, continuously-welded airfoil blades.
- Adjustable leveling legs are standard.
- OPSB motors are standard; TEFC motors are optional. Call factory.

								Without Motor Starters		With Motor Starters		
Fan Diameter		Power		Phase	Voltage	Weight		Part Number	List Price	Part Number	List Price	Transition, Heater, & Heater Adapter Plates**
inches	cm	hp	kW			lb	kg					
27"	68.58	5	3.73	1	230	395	179	04FC501		04FCS501		Use 083825 Transition Use DSH1-size heater with 083601 Adapter Plate
27"	68.58	5	3.73	3	230/460	367	166	04FC503		-		
27"	68.58	5	3.73	3	230	382	173	-		04FCS503		
27"	68.58	5	3.73	3	460	387	176	-		04FCS50A		
27"	68.58	7½	5.6	1	230	507	230	04FC751		04FCS751		Use 083825 Transition Use DSH1-size heater with 083602 Adapter Plate
27"	68.58	7½	5.6	3	230/460	490	222	04FC753		-		
27"	68.58	7½	5.6	3	230	510	231	-		04FCS753		
27"	68.58	7½	5.6	3	460	515	234	-		04FCS75A		
27"	68.58	10	7.46	1	230	555	252	04CHA101		04CHS101		Use 083825 Transition Use DSH1-size heater with 043171 Adapter Plate
27"	68.58	10	7.46	3	230/460	510	231	04CHA103		-		
27"	68.58	10	7.46	3	230	530	240	-		04CHS103		
27"	68.58	10	7.46	3	460	535	243	-		04CHS10A		
27"	68.58	15	11.19	1	230	778	353	04CHA151		04CHS151		Use 083825 Transition Use DSH1-size heater with 043888 Adapter Plate
27"	68.58	15	11.19	3	230/460	660	299	04CHA153		-		
27"	68.58	15	11.19	3	230	680	308	-		04CHS153		
27"	68.58	15	11.19	3	460	685	311	-		04CHS15A		
27"	68.58	20	14.92	1	230	730	331	04CHA201		04CHS201		Use 083825 Transition Use DSH1-size heater -No adapter required-
27"	68.58	20	14.92	3	230/460	710	322	04CHA203		-		
27"	68.58	20	14.92	3	230	730	331	-		04CHS203		
27"	68.58	20	14.92	3	460	735	333	-		04CHS20A		
30"	76.2	25	18.65	3	230/460	796	361	04CHA253		-		Use 083863 Transition Use DSH2-size heater with 043184 Adapter Plate
30"	76.2	25	18.65	3	230	821	372	-		04CHS253		
30"	76.2	25	18.65	3	460	826	375	-		04CHS25A		
-	-	-	-	--	-	-	-	-		-		
33"	83.82	30	22.38	3	230/460	1043	473	04CHA303		-		Use 083863 Transition Use DSH2-size heater with 043183 Adapter Plate
33"	83.82	30	22.38	3	230	1068	484	-		04CHS303		
33"	83.82	30	22.38	3	460	1073	487	-		04CHS30A		
33"	83.82	30	22.38	N/A	Engine Dr	818	371	04CHA30E		-		
33"	83.82	40	29.84	3	230/460	1087	493	04CHA403		-		Use 083863 Transition Use DSH2-size heater -No adapter required-
33"	83.82	40	29.84	3	230	1117	507	-		04CHS403		
33"	83.82	40	29.84	3	460	1122	509	-		04CHS40A		
33"	83.82	40	29.84	N/A	Engine Dr	840	381	04CHA40E		-		
36"	91.44	50	37.30	3	230/460	1540	699	04CHA50D		-		Use 083872 Transition Use DSH3-size heater with 043179 Adapter Plate
36"	91.44	50	37.30	3	230	1570	712	-		04CHS50D		
36"	91.44	50	37.30	3	460	1575	714	-		04CHS-50DA		
36"	91.44	50	37.30	N/A	Engine Dr	1287	584	04CHA50E		-		

*Add 20 lb to weight for fans with motor starters.





SUGGESTED LIST PRICES

Downstream Heaters

For 10 hp to 50 hp [7.46 kW to 37.28 kW] Centrifugal Fans

Downstream Heaters Feature

- Externally-adjustable air vanes facilitate heat distribution adjustments.
- Housing is constructed of bolted G-90 galvanized steel.
- Super-efficient burner design provides 4 Million BTU output (maximum).
- Large, easy-to-open door optimizes accessibility.
- Ignition shuts down after burner is lit, extending the life of the ignition components.
- Includes a sealed microprocessor-controlled ignition module with a 14,000 volt Honeywell spark generator.
- A heavy-duty flame probe proves flame presence by measuring the conductivity of the flame.
- Heaters include a built-in purge delay.
- An easily-adjustable vaporizer on LP units provides maximum operating efficiency.
- Many safety features are built-in to shut down the burner if a malfunction occurs.

	Downstream Heater Model					List Price	Weight	
	Description	Part Number	Power		Temperature Control		lb	kg
			hp	kW				
DSH1	Heater LPG with Vaporizer	04DSH1LPH	5-20	3.73-14.91	On-Off Cycling		140	64
	Heater LPG with Vaporizer	04DSH1LPHL	5-20	3.73-14.91	High-Low		146	66
	Heater LPG with Vaporizer	04DSH1LPM	5-20	3.73-14.91	Modulating Valve		146	66
	Heater Natural Gas	04DSH1NGH	5-20	3.73-14.91	On-Off Cycling		130	59
	Heater Natural Gas	04DSH1NGHL	5-20	3.73-14.91	High-Low		135	61
	Heater Natural Gas	04DSH1NGM	5-20	3.73-14.91	Modulating Valve		135	61
DSH2	Heater LPG with Vaporizer	04DSH2LPH	20-40	14.91-29.83	On-Off Cycling		150	68
	Heater LPG with Vaporizer	04DSH2LPHL	20-40	14.91-29.83	High-Low		156	71
	Heater LPG with Vaporizer	04DSH2LPM	20-40	14.91-29.83	Modulating Valve		156	71
	Heater Natural Gas	04DSH2NGH	20-40	14.91-29.83	On-Off Cycling	***	140	64
	Heater Natural Gas	04DSH2NGHL	20-40	14.91-29.83	High-Low		145	66
	Heater Natural Gas	04DSH2NGM	20-40	14.91-29.83	Modulating Valve		145	66
DSH3	Heater LPG with Vaporizer	04DSH3LPH	50	37.30	On-Off Cycling	***	160	73
	Heater LPG with Vaporizer	04DSH3LPHL	50	37.30	High-Low	***	166	75
	Heater LPG with Vaporizer	04DSH3LPM	50	37.30	Modulating Valve		166	75
	Heater Natural Gas	04DSH3NGH	50	37.30	On-Off Cycling	***	150	68
	Heater Natural Gas	04DSH3NGHL	50	37.30	High-Low	***	155	70
	Heater Natural Gas	04DSH3NGM	50	37.30	Modulating Valve		155	70

*** Call Factory for Pricing

•For units configured for propane vapor operation, please call the factory.

Note: If a thermostat is required, please order from page F-14.





SUGGESTED LIST PRICES

FANS, HEATERS, AND TRANSITIONS

Effective: 2011-11-1

F-5

Centrifugal Fans

Galvanized 60 Hz, 3500 RPM

Product Features

- Housing is constructed of G-90 galvanized steel.
- Vibration-proof, bolted design eliminates welded seams.
- Slots for lifting hooks are included for ease of installation.
- Adjustable leveling legs are standard.
- Fan wheels are constructed with dynamically-balanced, continuously-welded airfoil blades (except on 20-60 hp models which have back ward-inclined flat blades).
- TEFC motors are standard.

								Without Motor Starters		With Motor Starters	
Wheel Diameter		Power		Phase	Voltage	Weight		Part Number	List Price	Part Number	List Price
inches	cm	hp	kW			lb	kg				
15	38.10	3	2.24	1	230	265	120	HSCB1503216		HSCS1503216	
15	38.10	3	2.24	3	230	265	120	-		HSCS1503236	
15	38.10	3	2.24	3	230/460	265	120	HSCB1503D36		-	
15	38.10	3	2.24	3	460	265	120	-		HSCS1503436	
15	38.10	5	3.73	1	230	280	127	HSCB1505216		HSCS1505216	
15	38.10	5	3.73	3	230	280	127	-		HSCS1505236	
15	38.10	5	3.73	3	230/460	280	127	HSCB1505D36		-	
15	38.10	5	3.73	3	460	280	127	-		HSCS1505436	
18	45.72	7½	5.59	1	230	440	200	HSCB1807216		HSCS1807216	
18	45.72	7½	5.59	3	230	440	200	-		HSCS1807236	
18	45.72	7½	5.59	3	230/460	440	200	HSCB1807D36		-	
18	45.72	7½	5.59	3	460	440	200	-		HSCS1807436	
18	45.72	10	7.46	1	230	440	200	HSCB1810216		HSCS1810216	
18	45.72	10	7.46	3	230	440	200	-		HSCS1810236	
18	45.72	10	7.46	3	230/460	440	200	HSCB1810D36		-	
18	45.72	10	7.46	3	460	440	200	-		HSCS1810436	
18	45.72	15	11.19	3	230	500	227	-		HSCS1815236	
18	45.72	15	11.19	3	230/460	500	227	HSCB1815D36		-	
18	45.72	15	11.19	3	460	500	227			HSCS1815436	
22	55.88	20	14.91	3	230	685	311	-		HSCS2220236	
22	55.88	20	14.91	3	230/460	685	311	HSCB2220D36		-	
22	55.88	20	14.91	3	460	685	311	-		HSCS2220436	
22	55.88	25	18.64	3	230	695	315	-		HSCS2225236	
22	55.88	25	18.64	3	230/460	695	315	HSCB2225D36		-	
22	55.88	25	18.64	3	460	695	315	-		HSCS2225436	
22	55.88	30	22.37	3	230	795	361	-		HSCS2230236	
22	55.88	30	22.37	3	230/460	795	361	HSCB2230D36		-	
22	55.88	30	22.37	3	460	795	361	-		HSCS2230436	
22	55.88	40	29.83	3	230	895	406	-		HSCS2240236	
22	55.88	40	29.83	3	230/460	895	406	HSCB2240D36		-	
22	55.88	40	29.83	3	460	895	406	-		HSCS2240436	
22	55.88	50	37.28	3	230	985	447	-		HSCS2250236	
22	55.88	50	37.28	3	230/460	985	447	HSCB2250D36		-	
22	55.88	50	37.28	3	460	985	447	-		HSCS2250436	
22	55.88	60	44.74	3	230	1145	519	-		HSCS2260236	
22	55.88	60	44.74	3	230/460	1145	519	HSCB2260D36		-	
22	55.88	60	44.74	3	460	1145	519	-		HSCS2260436	



*Add 10 lb for units equipped with controls.

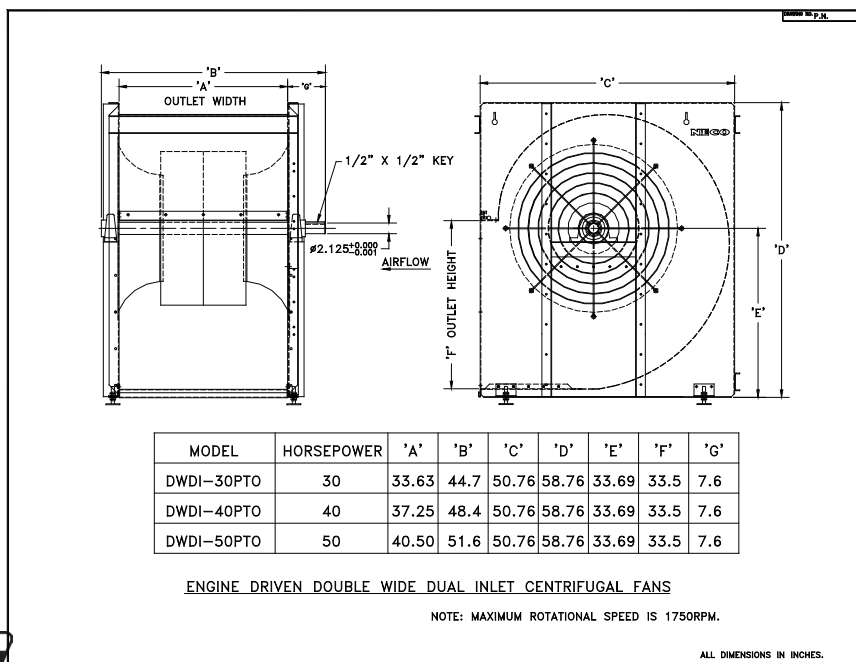
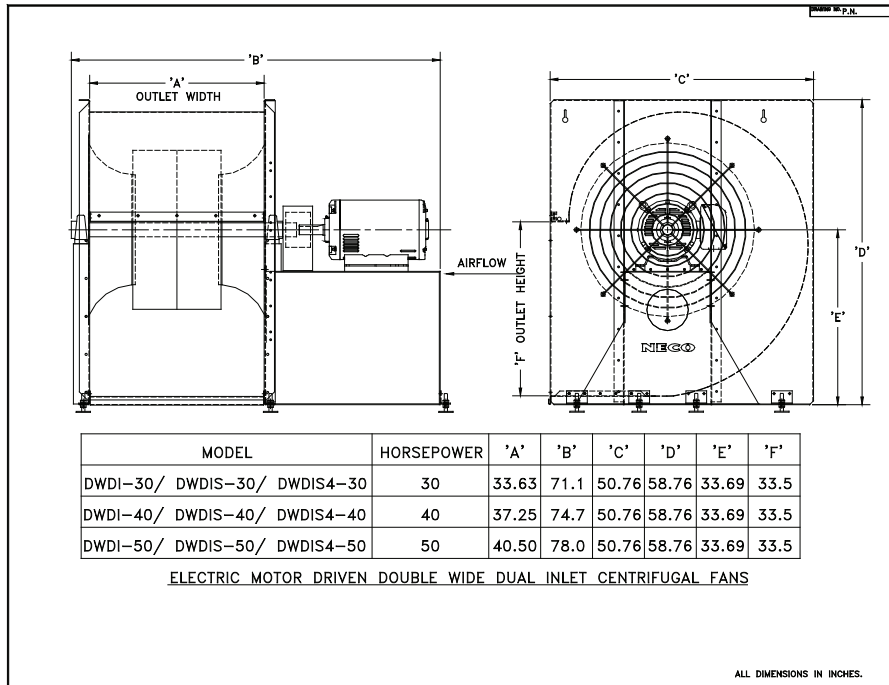


SUGGESTED LIST PRICES

Centrifugal Fans - Double wide, Dual Inlet

Product Features

- 1750 RPM (maximum)
- Housing is constructed of G-90 galvanized steel.
- Bolted housing design eliminates welded seams.
- Electric-motor-driven models are equipped with a coupling safety guard.
- All models are equipped with easy-access, externally-mounted ball bearing pillowblocks.
- All models are equipped with continuously-welded, dynamically-balanced airfoil blade wheels.
- Adjustable leveling legs are supplied for all models .
- OPSB motors are standard; TEFC motors are optional. Call factory.





SUGGESTED LIST PRICES

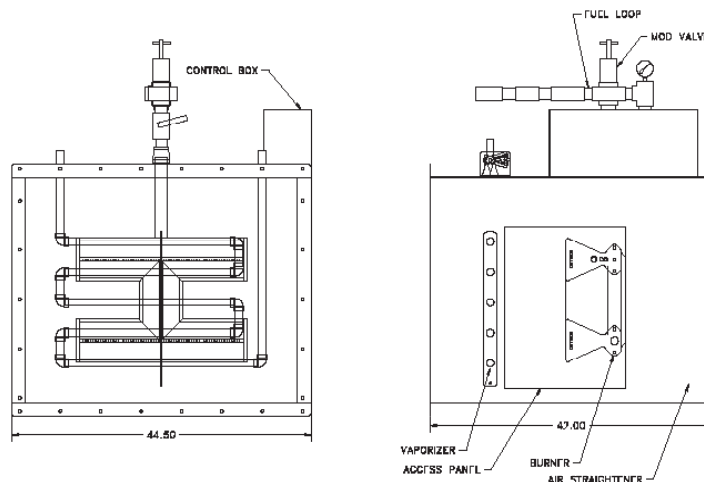
Centrifugal Fans - Double wide, Dual Inlet (Continued)

Power		Catalog Number	List Price	Motor & Control Voltage	Motor Starter	Transition Part Number	List Price
hp	kW						
30	22.37	DWDI-30PTO		N/A	N/A	082879	
30	22.37	DWDI-30		230/460	NO	082879	
30	22.37	DWDIS-30		230	YES	082879	
30	22.37	DWDIS4-30		460	YES	082879	
40	29.83	DWDI-40PTO		N/A	N/A	082879	
40	29.83	DWDI-40		230/460	NO	082879	
40	29.83	DWDIS-40		230	YES	082879	
40	29.83	DWDIS4-40		460	YES	082879	
50	37.28	DWDI-50PTO		N/A	N/A	082879	
50	37.28	DWDI-50		230/460	NO	082879	

DWDI Downstream Heaters

- Units are constructed of heavy-duty, bolted, galvanized G-90 steel
- Each unit is equipped with a heavy-duty "H"-style burner
- Each heater is equipped with an OSI ignition system - including a flame switch check circuit, purge-delay timers, and a pilot ignition circuit
- Each unit includes a Burner high limit switch and a transition high limit switch
- LP models include an airflow safety switch and a vaporized propane high limit
- LP models are equipped with an adjustable liquid propane vaporizer
- All external wiring is installed in liquid-tight conduits
- Each heater is furnished with a plenum thermometer and a thermostat kit

Description	Part Number	List Price	Weight	
			lb	kg
Downstream heater (LP with Modulating Valve Control)	04DSH6LPM		tbd	tbd
Downstream heater (LP with Hi-Lo Control)	04DSH6LPHL		tbd	tbd
Downstream heater (NG with Modulating Valve Control)	04DSH6NGM		tbd	tbd
Downstream heater (NG with Hi-Lo Control)	04DSH6NGHL		tbd	tbd



Manufactured by





SUGGESTED LIST PRICES



Centrifugal Fans Galvanized 50 Hz, 2900 RPM

Product Features

- Housing is constructed of G-90 galvanized steel.
- Bolted design eliminates welded seams.
- Slots for lifting hooks are included for ease of installation.
- Adjustable leveling legs are standard.
- Fan wheels are constructed with dynamically-balanced, airfoil blades (except on 50 hp [37.28 kW] models which have backward-inclined flat blades).
- TEFC motors are standard.

Centrifugal Fan - Description								Without Motor Starters		*With Motor Starters		Shutter Assembly
Wheel Diameter		Power		Phase	Voltage	Weight		Part Number	List Price	Part Number	List Price	
inches	cm	hp	kW			lb	kg					
18	±46	3	2.24	3	380	329	149	HSCB1803335		HSCS1803335		043777
18	±46	5	3.73	3	380	349	158	HSCB1805335		HSCS1805335		043777
22	±56	7½	5.6	3	380	450	204	HSCB2275335		HSCS2275335		043702
22	±56	10	7.6	3	380	460	209	HSCB2210335		HSCS2210335		043702
22	±56	15	11.2	3	380	502	228	HSCB2215335		HSCS2215335		043702
22	±56	20	14.9	3	380	582	264	HSCB2220335		HSCS2220335		043702
22	±56	25	18.6	3	380	611	277	HSCB2225335		HSCS2225335		043702
24	±61	30	22.3	3	380	791	359	HSCB2430335		HSCS2430335		043791
24	±61	40	28.8	3	380	895	406	HSCB2440335		HSCS2440335		043791
24	±61	50	37.3	3	380	984	446	HSCB2450335		HSCS2450335		043791

*These starters are for 380 volt, full voltage, across-the-line applications. If Wye-start Delta-Run starters are required, please call the NECO factory. Starters are also available in 220 and 440 volt, 50 Hz. Please call the factory.

All 50-Hz high-speed centrifugal fans use the 083825 hucked transition (see page F-12).

If an unassembled transition is required, use 084029.

Manufactured by





SUGGESTED LIST PRICES

CE Centrifugal Fans

Galvanized 50 Hz, 1450 RPM

Product Features

- Housing is constructed of G-90 galvanized steel.
- Bolted design eliminates welded seams.
- Slots for lifting hooks are included for ease of installation.
- Adjustable leveling legs are standard.
- Fan wheels are constructed with dynamically-balanced, continuously-welded airfoil blades (except on 50 hp models which have backward-inclined flat blades).
- TEFC motors are standard.

								Without Motor Starters		With Motor Starters	
Wheel Diameter		Power		Phase	Voltage	Weight		Part Numbers	List Price	Part Numbers	List Price
inches	cm	hp	kW			lb	kg				
27	±69	3	2.2	3	220/380/440	353	160	04CHA033-50		04CHS033-50	
27	±69	5	3.7	3	220/380/440	366	166	04CHA053-50		04CHS053-50	
33	±84	7½	5.6	3	220/380/440	730	331	04CHA753-50		04CHS753-50	
33	±84	10	7.5	3	220/380/440	776	352	04CHA103-50		04CHS103-50	
33	±84	15	11.2	3	220/380/440	855	388	04CHA153-50		04CHS153-50	
33	±84	20	14.9	3	220/380/440	906	411	04CHA203-50		04CHS203-50	
33	±84	25	18.6	3	220/380/440	1,019	462	04CHA253-50		04CHS253-50	
33	±84	30	22.4	3	220/380/440	1,043	473	04CHA303-50		04CHS303-50	
36	±91	40	29.8	3	220/380/440	1,488	675	04CHA403-50		04CHS403-50	
36	±91	50	37.3	3	220/380/440	1,541	699	04CHA503-50		04CHS503-50	

* These are 380 volt, full-voltage, across-the-line starters. If Wye-start Delta-Run starters are required, please call the factory. Starters are also available in 220 and 440 volt, 50 hertz. Please call the factory.

Centrifugal Fan Performance (cubic meters per hour)											
Power		Static Pressure (mm water)									
hp	kW	25	50	75	100	125	150	175	200	225	250
7½	5.6	13688	13262	12837	12242	11562	10542	9097	5101	-	-
10	7.5	18363	17726	17173	16366	15473	14198	12242	8077	-	-
15	11.2	27545	26695	25845	24655	23294	21254	18363	12072	-	-
20	14.9	36557	35367	34176	32646	30606	28055	24144	13943	-	-
25	18.6	47779	46419	44888	42848	40297	36727	31796	18023	-	-
30	22.4	52710	51180	49309	47609	44548	40808	34856	20064	-	-
40	29.8	63082	60871	58491	56110	53560	51009	47949	44208	39107	-
50	37.3	64612	62572	60361	58321	56110	53560	51009	47609	43018	35707





SUGGESTED LIST PRICES

CE **Downstream Heaters**
50 Hz 120V
or 20 - 50 hp [14.91-37.28 kW]
1450 RPM Centrifugal Fans

DOWNSTREAM HEATERS Feature

- Externally-adjustable air vanes optimize heat distribution.
- Constructed of bolted, G-90 galvanized steel.
- Super-efficient burner design provides 4 Million BTU (maximum) output.
- Large, easy-open door optimizes accessibility.
- Includes a sealed microprocessor-controlled ignition module with a 14,000 volt Honeywell spark generator.
- A heavy-duty flame probe and ignitor are included.
- A diaphragm-type air proving switch is included.
- Housing is equipped with two view ports.
- An easily-adjustable vaporizer on LP units provides maximum operating efficiency.
- Many safety features are built-in to shut down the burner if a malfunction occurs.
- An internal plastic shield is included in the control box.

Downstream Heater Model	Temperature	Part Number	List Price	Weight	
				lb	kg
20 - 30 hp Heater LPG with Vaporizer	On-Off Cycling	04DSH2LPH-CE	***	141	64
20 - 30 hp Heater LPG with Vaporizer	High-Low	04DSH2LPHL-CE		146	66
20 - 30 hp Heater LPG with Vaporizer	Modulating Valve	04DSH2LPM-CE		146	66
20 - 30 hp Heater Natural Gas	On-Off Cycling	04DSH2NGH-CE	***	130	59
20 - 30 hp Heater Natural Gas	High-Low	04DSH2NGHL-CE		135	61
20 - 30 hp Heater Natural Gas	Modulating Valve	04DSH2NGM-CE		135	61
40 - 50 hp Heater LPG with Vaporizer	On-Off Cycling	04DSH3LPH-CE	***	162	73
40 - 50 hp Heater LPG with Vaporizer	High-Low	04DSH3LPHL-CE	***	167	76
40 - 50 hp Heater LPG with Vaporizer	Modulating Valve	04DSH3LPM-CE		167	76
40 - 50 hp Heater Natural Gas	On-Off Cycling	04DSH3NGH-CE	***	151	68
40 - 50 hp Heater Natural Gas	High-Low	04DSH3NGHL-CE	***	156	71
40 - 50 hp Heater Natural Gas	Modulating Valve	04DSH3NGM-CE		156	71

*** Call Factory for Pricing

NOTE: If a thermostat is required, please order from page F-14.

Manufactured by



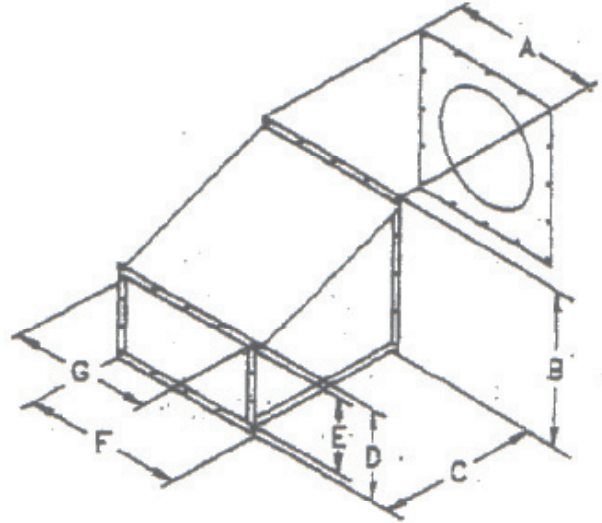


SUGGESTED LIST PRICES

Small Axial Standard Fan Transitions with Adapter Plates

Complete Transition Kits Include

- Assembled Transition
- Weather strip
- Fan-to-Transition Adapter Plate



Blank Adapter Plates fit to Transitions without fan hole cutout from the factory and must be cut on-site.

Small Transition Dimensions													
A		B		C		D		E		F		G	
Inches	mm	Inches	mm	Inches	mm	Inches	mm	Inches	mm	Inches	mm	Inches	mm
23 1/8	590	23 1/8	590	24	610	13 3/4	350	11 1/8	285	23 1/8	590	20 1/2	520

Small Axial Fan Transition Kits and Components							
Axial		Complete Transition Kit		Adapter Plate Only		Transition Only	
Inches	mm	Part No.	List Price	Part No.	List Price	Part No.	List Price
12	305	040758		040733		040722	
14	356	040759		040734			
16	406	040760		040735			
18	457	040761		040736			
Blank Adapter Plate		040765		040732			





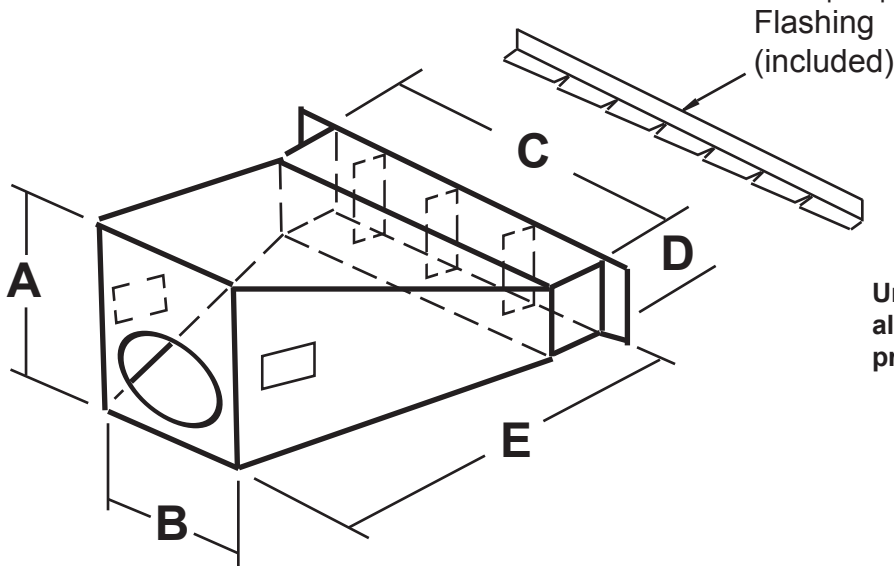
SUGGESTED LIST PRICES

Standard Fan Transitions

Bolted Transitions

PRODUCT FEATURES

- Transitions are manufactured from 16-gauge G-90 galvanized steel.
- All transitions are assembled and ready for cutting into the bin plenum.
- Transitions include a built-in rectangular entrance collar.
- The sides of the entrance collar have flashing attached. The flashing bolts up to the bin.
- Item includes a top piece of flashing. It is to be drilled and caulked to fit the curvature of the bin above the entrance collar.
- Blank Adapter Plates come with a starter hole that can be enlarged and drilled to fit the fan on-site.
- Removable access doors on the side of the transition allow for easy bolting up of fans.
- Transitions include an angle (part number 081022) . This angle adapts the transitions to our special "U" channel on the bottom of the outlet of NECO centrifugal fans.
- Transition kits include assembled transition and fan-to-transition adapter plate.



Un-Assembled Transitions are also available. Call Factory for pricing.

Standard Transition Dimensions (Part number with Blank Adapter Plate)											
Part Number	List Price	A		B		C		D		E	
		Inches	mm	Inches	mm	Inches	mm	Inches	mm	Inches	mm
040765		See Small Transition Dimensions on Previous Page									
083825		35	890	33 3/4	855	52	1320	12	305	47	1195
083863		40	1015	31 1/2	800	72	830	12	305	53	1345

Manufactured by





SUGGESTED LIST PRICES

Standard fan Transitions (Continued)								
Standard 60Hz Fan Transition Kits and Components								
Fan Type	Fan Power		Complete Transition Kit		Adapter Plate Only		Transition Only	
	hp	kW	Part No.	List Price	Part No.	List Price	Part No.	List Price
24" Axial	5-10	3.7-7.5	084491		084007		084488	
28" Axial	10-15	7.5-11.2	084492		083842			
Low-Speed Centrifugal (1750rpm)	5	3.7	084493		084008		084488	
	7.5	5.6	084494		084009			
	10	7.5	084495		084010			
	15	11.2	084496		084011			
	20	14.9	084497		084012			
	25	18.6	084498		084015		084489	
	30	22.4	084499		084016			
	40	29.8	084500		084017			
		50	37.3	084501		084018		084490
	60	44.7	084502		084019			
Hi-Speed Centrifugal (3500rpm)	3-5	2.2-3.7	084503		084475		040722	
	7.5-15	5.6-11.2	084504		084476			
	20-60	14.9-44.7	084505		084020		084488	

Standard 50Hz Fan Transition Kits and Components								
Fan Type	Fan Power		Complete Transition Kit		Adapter Plate Only		Transition Only	
	hp	kW	Part No.	List Price	Part No.	List Price	Part No.	List Price
24" Axial	5-10	3.7-7.5	084491		084007		084488	
28" Axial	10-15	7.5-11.2	084492		083842			
Low-Speed Centrifugal (1450rpm)	3	2.2	084506		084477		084488	
	5	3.7	084507		084478			
	7.5	5.6	084508		084479			
	10	7.5	084509		084480			
	15	11.2	084510		084481			
	20	14.9	084511		084482		084489	
	25	18.6	084512		084483			
	30	22.4	084513		084484			
		40	29.8	084514		084485		084490
	50	37.3	084515		084486			
High-Speed Centrifugal (2900rpm)	3-5	2.2-3.7	084504		084476		040722	
	7.5-25	5.6-18.6	084505		084020		084488	
	30-40	22.4-29.8	084516		084487			
	50	37.3	084494		084009			

Manufactured by



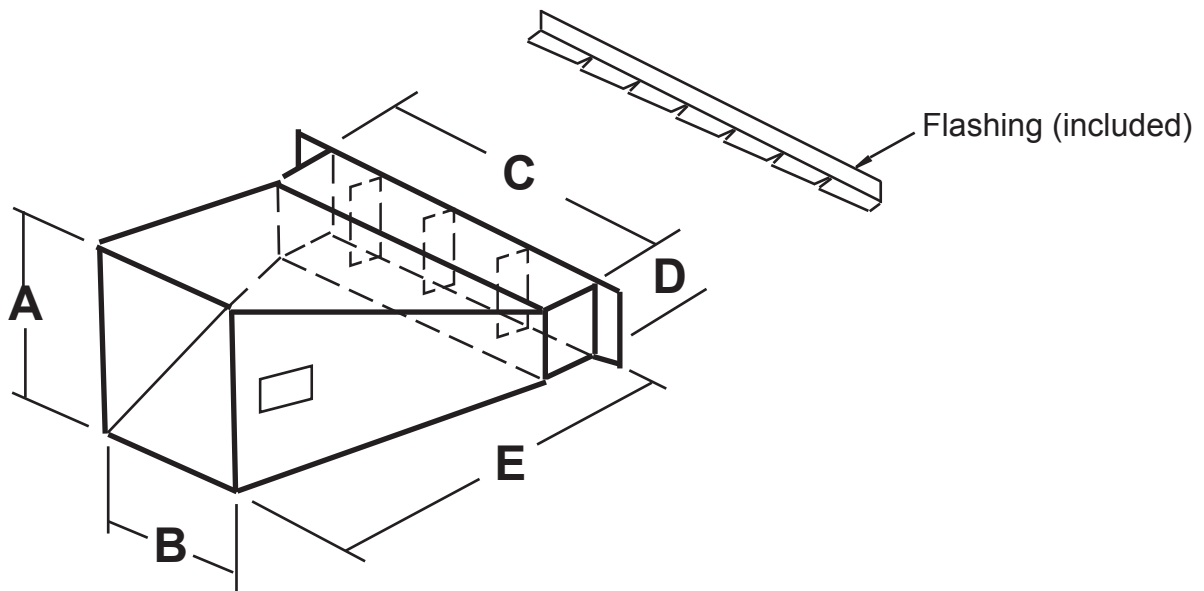


SUGGESTED LIST PRICES

Special Fan Transitions Bolted Transitions

PRODUCT FEATURES

- Transitions are manufactured from 16-gauge G-90 galvanized steel.
- Transitions include a built-in rectangular entrance collar.
- The sides of the entrance collar have flashing attached. Flashing is to be bolted to the bin.
- A top piece of flashing is included. It is to be drilled and caulked to fit the curvature of the bin above the entrance collar.
- Removable access doors on the side of the transition allow for easy bolting up of fans.
- Transitions include an angle (part number 081022). This angle adapts the transitions to our special "U" channel on the bottom of the outlet of NECO centrifugal fans.



Part Number	A		B		C		D		E	
	inches	mm	inches	mm	inches	mm	inches	mm	inches	mm
040765	23 ¹ / ₈	587	23 ¹ / ₄	587	23 ¹ / ₄	587	11 ¹ / ₄	286	24	610
040792	34	864	28 ¹ / ₂	724	58	1473	11	279	51	1295
040793	35	889	24	610	76.5	1943	11	279	56	1422
082879	36	914	44.5	1130	126	3200	12	305	77.5	1968

Transition to be Used	List Price	Weight	
		lb	kg
040765		50	23
040792		278	126
040793		312	141
082879		*	*



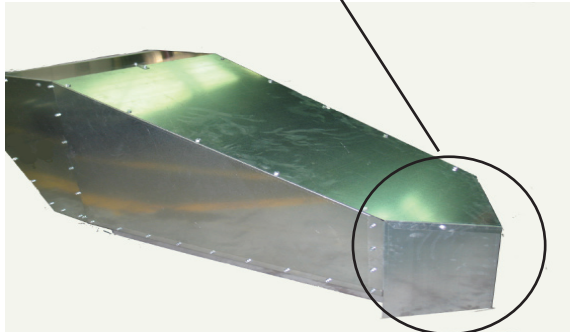


SUGGESTED LIST PRICES

Power Roof Exhausters



Peaked to prevent trash build-up!



Fan Type	Power		Part Number	List Price
	hp	kW		
24" [60.96cm] 1-Phase	2	1.49	04RE4201	
24" [60.96cm] 3-Phase	2	1.49	04RE4203	
24" [60.96cm] 1-Phase Explosion-proof	2	1.49	04RE4201X	
24" [60.96cm] 3-Phase Explosion-proof	2	1.49	04RE4203X	

- INCLUDES:**
- Totally-enclosed 1750 rpm motor
 - Aero-dynamic fan-bladed impeller
 - Peaked housing to prevent trash build-up
 - Bolted-together construction
 - 16-gauge galvanized steel housing
 - 10,000 CFM airflow at 0" Static Pressure

Grain Bin Roof Vents

Hooded Vent

Part Number 036825	
-----------------------	--

Hooded Vent with V-Plate

Part Number 082741	
-----------------------	--

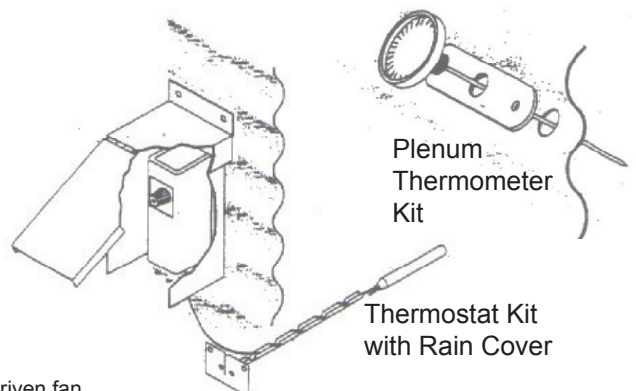
V-Plate

Part Number 082740	
-----------------------	--

- 26-gauge Galvanized Construction
- 20-gauge Galvanized Base Frame
- Fabricated with Leak Proof Lock Seam Joints
- $\frac{3}{8}$ " [9.53mm] Mounting Holes
- 70° Construction Allows for Weather Protection & Unobstructed Airflow

- No Hatches to Remember to Open or Close
- Galvanized Bird Screen with $\frac{1}{2}$ " Square Openings
- Large 15" x 15" [38.10 x 38.10 cm] Opening Can Efficiently Handle Up to 1000 CFM of Airflow

Additional Fan Accessories		
Description	Part Number	List Price
Plenum Thermometer Kit	010106	
Static Pressure Gauge Kit	043549	
Thermostat Kit with Rain Cover	040826	
Dual Burner Control Kit	043550	
Air Switch Kit	043395	



Note: The Air Switch Kit is required when using a heater with an engine-driven fan.



SUGGESTED LIST PRICES

Fan Shutters

Fan shutters prevent the back flow of air when starting multiple fans

Shutter Part Number	List Price	Centrifugal Fan Wheel Size	Fan hp range			
			60 Hz 3500 rpm	50 Hz 2900 rpm	60 Hz 1750 rpm	50 Hz 1450 rpm
043778		15"	3-5	N/A	N/A	N/A
043777		18"	7½-15	3-7½	N/A	N/A
043702		22"	20-60	10-25	5	N/A
043791		24"	N/A	30-50	7½	N/A
043779		27"	N/A	N/A	10-20	3
043780		30"	N/A	N/A	25	5
043780		33"	N/A	N/A	30-40	7½-30
043781		36"	N/A	N/A	50-60	40-50

Shutter Part Number	List Price	Axial Fan Impeller Size
083962		18"
043916		24" & 28"
083961		38"
081116		44"

* Adapter plates may be required (see the Adapter Plate tables—below and on the following page). Shutters do not require a separate adapter plate if one is already ordered for a heater. In cases where the heater and fan combination don't require an adapter plate none will be required for the shutter either.

** An adapter plate is always required with an axial fan, even with the heater.

***Call the NECO factory for information regarding unlisted adapter plates.

Axial Fan Adapter Plates

Power		3600 RPM Axial	List Price
hp	kW		
5-7	3.73-5.22	043903	
7½-10	5.59-7.46	043903	
10-15	7.46-11.19	043927	





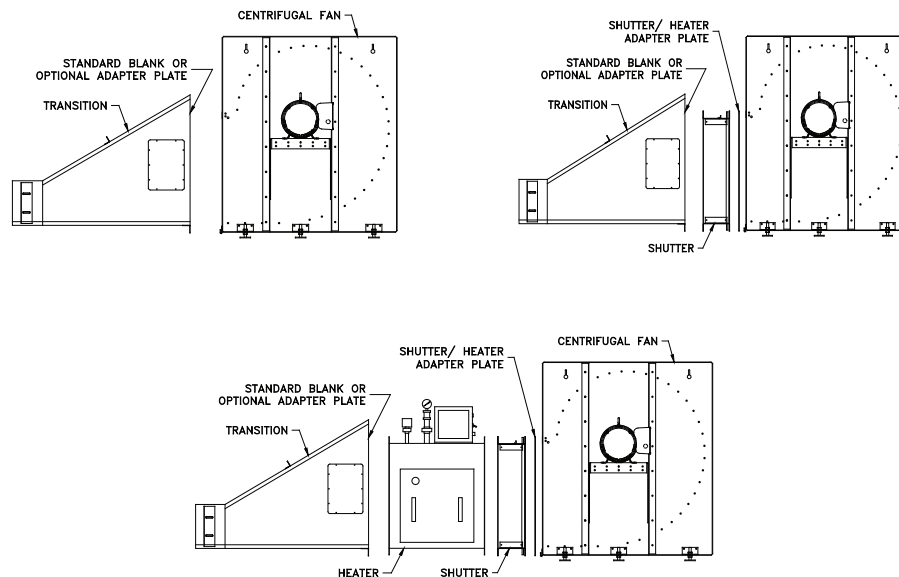
SUGGESTED LIST PRICES

Adapter Plates for NECO 60 Hz Centrifugal Fans with Transitions

Series	60 Hz Low-Speed Centrifugal Large-Diameter Wheel Fan hp	Transition	Heater / Shutter 04DSH1/043702 Adapter Plate	Heater / Shutter 04DSH1/043779 Adapter Plate	Heater / Shutter 04DSH2/043780 Adapter Plate	Heater / Shutter 04DSH3/043781 Adapter Plate
04FC	5 (1750 rpm)	083825*	083601	-	-	-
04FC	7½ (1750 rpm)	083825*	-	083602	-	-
04CH	10 (1750 rpm)	083825*	-	043171	-	-
04CH	15 (1750 rpm)	083825*	-	043888	-	-
04CH	20 (1750 rpm)	083825*	-	Not Required	-	-
04CH	25 (1750 rpm)	083863*	-	-	043184	-
04CH	30 (1750 rpm)	083863*	-	-	043183	-
04CH	40 (1750 rpm)	083863*	-	-	Not Required	-
04CH	50 (1750 rpm)	083872*	-	-	-	043179
04CH	60 (1750 rpm)	083872*	-	-	-	081104

Series	60 Hz High-Speed Centrifugal Fan hp	Transition		(Heater Unavailable) Shutter 043778 Adapter Plate	(Heater Unavailable) Shutter 043777 Adapter Plate	(Heater Unavailable) Shutter 043702 Adapter Plate
HSC	3 (3500 rpm)	040765*	-	Not Required	-	-
HSC	5 (3500 rpm)	040765*	-	Not Required	-	-
HSC	7½ (3500 rpm)	040765*	-	-	Not Required	-
HSC	10 (3500 rpm)	040765*	-	-	Not Required	-
HSC	15 (3500 rpm)	040765*	-	-	Not Required	-
HSC	20 (3500 rpm)	083825*	-	-	-	Not Required
HSC	25 (3500 rpm)	083825*	-	-	-	Not Required
HSC	30 (3500 rpm)	083825*	-	-	-	Not Required
HSC	40 (3500 rpm)	083825*	-	-	-	Not Required
HSC	50 (3500 rpm)	083825*	-	-	-	Not Required
HSC	60 (3500 rpm)	083825*	-	-	-	Not Required

*Supplied with a blank adapter plate that customer must cut and drill to fit.





SUGGESTED LIST PRICES

Centrifugal Fan Rain Hoods

Centrifugal Fan Size		Rain Hood Part Number	Rain Hood List Price
inches	cm		
15	38.10	083963	
18	54.72	081203	
22	55.88	081204	
24	60.96	043977	
27	68.58	081140	
30 & 33	76.2 & 83.82	081201	
36	91.44	081202	

