



Discharge Heads

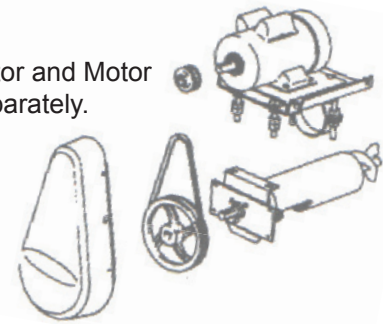
for Horizontal Unloading

Prices Include

- Discharge Head with Heavy-Duty Flighting
- Sealed, Self Aligning Bearing
- Drive Kit (Driven Pulley & Belt(s))
- E-Z Off Motor Mount
- Belt Shield

For Bill Of Lading Items, see Page B-2

Order Motor and Motor Pulley separately.



Order Tube and Auger Extensions to make up the required length.

Discharge Heads with Motor Mount, Drive Kit, & Belt Shield							
Size inches (cm)	Belts	Power		Part Number	List Price	Weight	
		hp	kW			lb	kg
6" (15.24)	1	Thru 2	Thru 1.49	047186		75	34
	2	3 - 5	2.24-3.73	047187		77	35
	3	7½	5.59	047188		81	37
	1*	Thru 3	Thru 2.24	048489		112	51
	2*	5 - 7½	3.73-5.59	048490		114	52
8" (20.32)	1	Thru 2	Thru 1.49	047189		83	38
	2	3 - 5	2.24-3.73	047190		85	39
	3	7½ - 10	5.59-7.46	047191		89	41
	1*	Thru 3	Thru 2.24	048488		121	55
	2*	5 - 7½	3.73-5.59	048487		124	56
10" (25.40)	1	Thru 2	Thru 1.49	047192		153	70
	2	3 - 5	2.24-3.73	047193		156	71
	3	7½ - 10	5.59-7.46	047194		159	72
	4	15	11.19	047195		195	89
	2*	5 - 7½	3.73-5.59	046000		196	90
	2**	10 - 15	7.46-11.19	048837		272	124
	3***	20	14.91	047196		276	125
12" (30.48)	3	5 - 10	3.73-7.46	047197		217	99
	4	15	11.19	047198		231	105
	2*	5 - 7½	3.73-5.59	046001		257	117
	2**	10 - 15	7.46-11.19	047199		300	136
	3**	20	14.91	047200		306	139

Discharge Head Lengths		
Size	Tube	Auger
6" (15.24 cm)	24" (60.96 cm)	30½" (77.47 cm)
8" (20.32 cm)	24" (60.96 cm)	33" (83.82 cm)
10" (25.40cm)	30" (76.2 cm)	43" (109.2 cm)
12" (30.48 cm)	36" (91.44 cm)	52" 132.1 cm)

Horsepower Requirements					
Size inches (cm)	Bin Diameter		Power		Belts
	Feet	Meters	hp	kW	
6" (15.24)	14-16	4.27-4.88	¼	0.19	1
	17-25	5.18-7.62	1	0.75	1
	26-57	7.93-17.37	2	1.49	1
8" (20.32)	14-22	4.27-6.71	2	1.49	1
	23-34	7.01-10.36	3	2.24	2
	35-63	10.67-19.2	5	3.73	2
10" (25.40)	64-75	19.51-22.76	7½	5.59	3
	76-120	23.16-36.58	10	7.46	3
	14-34	4.27-10.36	5	3.73	2
12" (30.48)	35-57	10.67-17.37	7½	5.59	3
	58-80	17.68-24.38	10	7.46	3
	81-113	24.69-34.44	15	11.19	4
	114-120	34.75-36.58	20	14.91	3****
12" (30.48)	14-25	4.27-7.62	5	3.73	3
	26-37	7.96-11.28	7½	5.59	3
	38-57	11.58-17.37	10	7.46	3
	58-80	17.68-24.38	15	11.19	4
	81-120	24.69-36.58	20	14.91	3****

* Discharge Head with #741 Speed Reducer Mounted
** Discharge Head with #3051 Speed Reducer Mounted

Accessories

Underbin Adaptors Hutchinson to NECO (Includes Flanged Connection Sleeve and Shaft with Hardware)			
6" (15.24 cm)		8" (20.32 cm)	
047036		047037	
E-Z Off Motor Mount without Pivot Plate (Includes Base Plate, Hardware, and Clamping Bands)			
6" (15.24 cm)		8" (20.32 cm)	
10" (25.40 cm)			
047350	047351	047352	
Bolt-on Flippers with Hardware			
6" (15.24 cm)		8" (20.32 cm)	
10" (25.40 cm)			
047343	047344	047345	

****Discharge Head with Speed Reducer

NOTE: Horsepower is rated for horizontal positioning in dry corn at the RPM listed. Use the next larger motor when drying high-moisture grain. Horespower and belts listed are for direct-drive units unless otherwise noted.



SECTION B - DISCHARGE HEADS

Effective: 2011-11-1
B-2

Horizontal Unloading Systems

Bill of Lading Items

Part Number	List Price	Description	047186	047187	047188	048489	048490	047189	047190	047191	048488	048487	047192	047193	047194	047195	048837	047196	047197	047198	047199	047200	046000	046001
047004		Discharge Head Assembly, 6" Modular	1	1	1																			
047005		Discharge Head Assembly, 8" Modular						1	1	1														
047006		Discharge Head Assembly, 10" Modular												1	1	1								
047007		Discharge Head Assembly, 12" Modular																	1	1				
021392		Discharge Head Assembly, 6" with 741 Reducer			1	1																		
047349		Discharge Head Assembly, 8" with 741 Reducer									1	1												
048834		Discharge Head Assembly, 10" with 741 Reducer																					1	
047015		Discharge Head Assembly, 10" with 3051 Reducer																	1	1				
048835		Discharge Head Assembly, 12" with 741 Reducer																						1
048836		Discharge Head Assembly, 12" with 3051 Reducer																				1	1	
022600		Drive Kit 12" x 1 1/4", 1-Belt	1					1																
022024		Drive Kit 12" x 1 1/4", 2-Belt		1					1															
022602		Drive Kit 12" x 1 1/4", 3-Belt			1																			
022608		Drive Kit 16" x 1 1/2", 1-Belt											1											
022609		Drive Kit 16" x 1 1/2", 2-Belt																						
022610		Drive Kit 16" x 1 1/2", 3-Belt																						
047014		Drive Kit 18.4" x 1 1/2", 4-Belt														1								
022939		Drive Kit 10" x 1", 1-Belt (for #741)				1					1													
022938		Drive Kit 10" x 1", 2-Belt (for #741)					1																1	1
048770		Drive Kit 6" x 1 1/2", 2-Belt (for #3051)																						
048777		Drive Kit 6" x 1 1/2", 3-Belt (for #3051)																						
047917		E-Z Off Motor Mount 6" and 8"	1	1	1	1	1	1	1	1	1	1												
047800		E-Z Off Motor Mount 10" and 12"											1	1	1	1							1	1
046150		E-Z Off Motor Mount 15-30 HP																						
047182		Belt Shield for up to 14" Pulleys	1	1	1	1	1	1	1	1	1	1											1	1
047915		Belt Shield up to 15" to 20" Pulleys																						



6" (15.24 cm) and 8" (20.32 cm)

Commercial Duty Discharge Heads

Designed to meet the needs of the industrial grain handling industry....

Special extra long connecting shaft is turned down to fit standard extension augers.

SPECIAL FEATURE

Drive shaft, auger fighting shaft, and connecting shaft are manufactured from one piece solid 1½" (3.81 cm) cold finished bar.

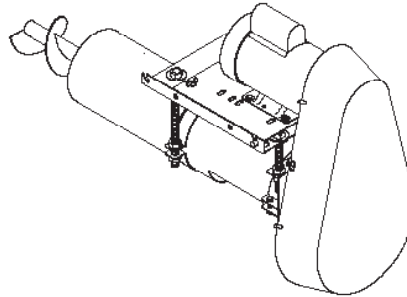
12-gauge HR Tube Painted with Industrial Enamel.

Heavy-Duty ¼" (0.64 cm) Flighting

Uses Popular Standard E-Z Off Motor Mount and Plastic Belt Shield.

Works with regular AP extensions featuring Standard or Heavy Duty flighting.

Order extensions from Page AP-2



Special 1/8" (0.32 cm) Galvanized Steel Reinforcing Plate behind the bearing.

Drive Shaft Size:

- 1¼" (3.18 cm) on 6" (15.24 cm) units
- 1½" (3.81 cm) on 8" (20.32 cm) Units*

* NOTE: You must use special 1½" (3.81 cm) bore drive kits with Commercial Discharge Heads.

Self-aligning, precision-grade, cast iron, flange bearing.
 • 1¼" (3.18 cm) on 6" (15.24 cm) units
 • 1½" (3.81 cm) on 8" (20.32 cm) Units

12" (30.48 cm) drive kit is standard; other slow speed drive kits are available.

List Prices

Description	6" Commercial-Duty Discharge Heads				8" Commercial-Duty Discharge Heads					
	Part Number	List Price	Weight		Part Number	List Price	Weight			
			lb	kg			lb	kg		
Discharge Head only	046273		-	-	046254		-	-		
E-Z Off Motor Mount	047917		25	11.5	047917		25	11.5		
Belt Shield	047182		10	4.5	047182		10	4.5		
Drive Kits	Power									
	hp	kW								
1 Belt	2 & under	1.49 & under	022600		4	1.8	046262		4	1.8
2 Belts	3-5	2.24-3.73	022024		6	2.7	022603		6	2.7
3 Belts	7½ - 10	5.59-7.46	022602		10	4.5	022604		10	4.5
4 Belts	15	11.19	-		-	-	047014		57	30

Discharge heads do not include connecting sleeves. A standard 14-gauge galvanized sleeve is included with each extension tube. This connecting sleeve will attach the discharge head to the tube. An optional extra heavy-duty 12-gauge x 2' long sleeve is available.

Optional Heavy-Duty 12-gauge x 2' sleeve				
Diameter	Part Number	List Price	Weight	
			lb	kg
6"	009324		18	8.2
8"	012313		24	11



Single-Drive Vertical Unloading Augers

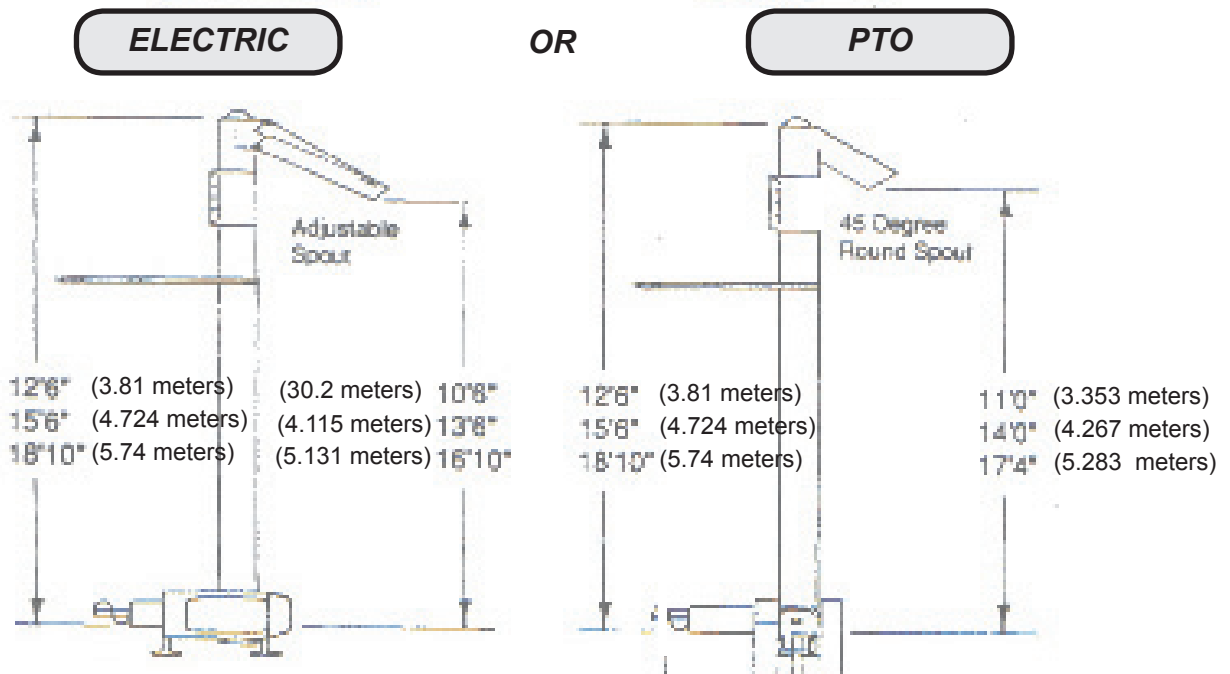
Single-Drive Vertical Unloading Augers (Electric or PTO) use one motor (or PTO drive) with a heavy-duty, oil bath, right angle gear box to drive the vertical auger. Horizontal and vertical augers must be the same size, i.e. a 6" horizontal unloading auger will require a 6" vertical.

- Features
- 2 auger sizes: (1) 6" (15.24 cm) to 6" (2) 8" (20.32 cm) to 8"
 - 2 types of drives: (1) Electric (2) PTO
 - 2 types of spouts: (1) Adjustable (2) 45° round
 - 3 dedicated heights: (1) 13' (3.96 m) (2) 16' (4.88 m) (3) 19' (5.80 m)
 - Sections are preassembled for easy installation

- Includes
- Vertical Auger Assembly with Heavy-Duty Gear Box
 - Vertical Discharge Head with Discharge Spout
 - Horizontal Discharge Kit
 - Drive Kit (Electric Unit)
 - PTO Drive Adaptor (PTO Unit)
 - Plastic Belt Shield (Electric Unit)
 - E-Z OFF Motor Mount (Electric Unit)
 - Adjustable Bin Bracket
 - Heavy-duty Gear Box with Shaft Cover (PTO Unit)
 - Chain Guard

Order motor and 3.2" (8.128 cm) OD motor pulley separately.

- 6" (15.24 cm) units require a 3.2" (8.128 cm) OD X 2-groove motor pulley
- 8" (20.32 cm) units require a 3.2" * 8.128 cm) OD X 3-groove motor pulley





Single-Drive Vertical Unloading Augers

Discharge Height		6" Electric Drive				8" Electric Drive			
		With Adjustable Spout	List Price	With 45° Spout	List Price	With Adjustable Spout	List Price	With 45° Spout	List Price
Feet	Meters								
13	3.962	014684		014687		014690		014693	
16	4.877	014685		014688		014691		014694	
19	5.791	014686		014689		014692		014695	

Discharge Height		6" PTO Drive				8" PTO Drive			
		With Adjustable Spout	List Price	With 45° Spout	List Price	With Adjustable Spout	List Price	With 45° Spout	List Price
Feet	Meters								
13	3.962	014699		014702		014705		014708	
16	4.877	014700		014703		014706		014709	
19	5.791	014701		014704		014707		014710	

Single-Drive Vertical Requirements									
Bin Diameter		Power		6" Belts	Pulley	hp	8" Belts	Pulley	
		hp	kW						
Up thru 30'	Up thru 9.144 meters'	5	3.73	2	3.2"	7½	3	3.2"	
31' thru 48'	9.449 thru 14.63 meters	7½	5.59	2	3.2"	10	3	3.2"	
49' thru 60'	14.94 thru 18.29 meters	10		2	3.2"	15	3	3.2"	

Option PTO Shaft			
Part Number	List Price	Weight	
		lb	kg
1002172		53	24

For bill of lading items and prices see page B-6.

Manufactured by



Division of GLOBAL Industries, Inc.
9364 North 45th St. - Omaha, NE 68152
800-367-6208 402-453-6912
www.necousa.com



Single-Drive Vertical Auger Bill of Lading Items

Group	Part Number	List Price	Description	014684 6 x 13ADJ	014687 6 x 13 45°	014685 6 x 16 ADJ	014688 6 x 16 45°	014686 6 x 19 ADJ	014689 6 x 19 45°	014690 8 x 13 ADJ	014693 8 x 13 45°	014691 8 x 16 ADJ	014694 8 x 16 45°	014692 8 19 ADJ	014695 8 x 19 45°	014699 6 x 13 ADJ	014702 6 x 13 45°	014700 6 x 16 ADJ	014703 6 x 16 45°	014701 6 x 19 ADJ	014704 6 x 19 45°	014705 8 x 13 ADJ	014708 8 x 13 45°	014706 8 x 16 ADJ	014709 8 x 16 45°	014707 8 x 19 ADJ	014710 8 x 19 45°		
Vertical Auger Assembly	014675		Vert Aug Assy 6" x 13' w/Gearbox	1	1											1	1												
	014676		Vert Aug Assy 6" x 16' w/Gearbox			1	1											1											
	014677		Vert Aug Assy 6" x 19' w/Gearbox					1	1											1									
	014221		Vert Aug Assy 8" x 13' w/Gearbox							1	1												1	1					
	014241		Vert Aug Assy 8" x 16' w/Gearbox									1	1												1	1			
	014514		Vert Aug Assy 8" x 19' w/Gearbox											1	1												1	1	
Horizontal Discharge Head	047918		Horz Dis Head 6" Sgl Mtr Vert	1	1	1	1	1	1							1	1	1	1	1	1								
	047919		Horz Dis Head 8" Sgl Mtr Vert							1	1	1	1	1	1								1	1	1	1	1	1	
Horizontal Kit	014682		BOP Horz Dis 6" Sgl Drv Vert	1	1	1	1	1	1							1	1	1	1	1	1								
	014683		BOP Horz Dis 8" Sgl Drv Vert							1	1	1	1	1	1								1	1	1	1	1	1	
Electric Drive Only	022024		Drive Kit 12" x 1 1/4" 2 Belt	1	1	1	1	1	1																				
	022602		Drive Kit 12" x 1 1/4" 3 Belt									1	1	1	1														
	047182		Belt Shield to 14" Pulley	1	1	1	1	1	1	1	1	1	1	1	1														
	047917		Motor Mount, E-Z OFF	1	1	1	1	1	1	1	1	1	1	1	1														
	048267		Guard, Chain 6"	1	1	1	1	1	1	1																			
	048173		Guard, Chain 8"								1	1	1	1	1														
PTO Drive Only	047530		Adaptor, PTO Drive Vertical													1	1	1	1	1	1	1	1	1	1	1	1	1	
	047183		Gearbox, B124 w/Shaft Cover													1	1	1	1	1	1	1	1	1	1	1	1	1	
Discharge Heads	014680		Disch Head, 6" Vert w/Adj Spout	1	1	1	1	1	1							1	1	1	1	1	1								
	014681		Disch Head, 6" Vert w/45° Spout																										
	014696		Disch Head, 8" Vert w/Adj Spout																										
	014697		Disch Head, 8" Vert w/45° Spout																										
Bin Bracket	014527		6" Adj Bin Bracket, Extra Long	1	1	1	1	1	1							1	1	1	1	1	1								
	014528		8" Adj Bin Bracket, Extra Long																										



Discharge Heads For Dual-Drive Vertical Unloading

Dual-drive systems use separate motor drives for horizontal and for vertical augers. Horizontal and vertical augers can be stepped up one size, i.e. a 6" horizontal unloading auger can be matched to either a 6" or 8" vertical discharge auger. NECO Dual- Drive Verticals can rotate left or right and incline 90 to 25 degrees. Order the tube and auger extensions separately to vary the vertical height from 3 feet to 23 feet.

Price Includes

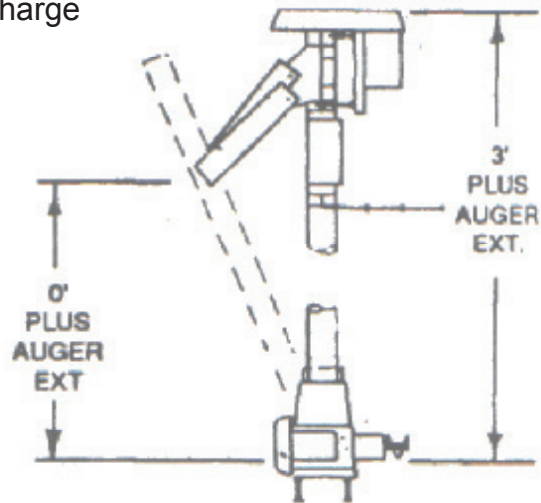
- 2 - Modular Discharge Heads with heavy-duty auger flight
- Grain Flippers for horizontal outlet and vertical discharge
- Vertical Force Feed Intake Boot
- 2 - Drive Kits
- 2 - E-Z OFF Motor Mounts
- 2 - Plastic Belt Shields
- Adjustable Vertical Discharge Spout
- Mounting Foot
- Adjustable Bin Bracket

Not Included

- Electric Motors and Motor Pulleys

For underbin auger use 3.2" motor pulley.
For vertical auger use 4.5" motor pulley
(except on increasing-size verticals where the motor pulleys are the same size).

DUAL DRIVE ELECTRIC



Horizontal to Vertical Size	Part Number	Belts		List Price	Weight	
		Horizontal	Vertical		lb	kg
6" Horizontal to 6" Vertical	047987	2	2		220	100
6" Horizontal to 8" Vertical	047996	2	2		262	119
8" Horizontal to 8" Vertical	048005	2	2		275	125
8" Horizontal to 10" Vertical	048014	2	2		377	171
10" Horizontal to 10" Vertical	048023	2	3		400	182

For horsepower, belt and pulley requirements, see next page.

Manufactured by



Division of GLOBAL Industries, Inc.
9364 No. 45th St. - Omaha, NE 68152
800-367-6208 402-453-6912
www.necousa.com



Discharge Heads for Dual-Drive Vertical Unloading

Dual Drive Vertical Requirements for Vertical Auger									
Height	6"			8"			10"		
	hp	Belts	Pulley	hp	Belts	Pulley	hp	Belts	Pulley
Up thru 11' (up thru 3.353 m)	1½	2	4½" (11.43 cm)	3	2	4½" (11.43 cm)	5	3*	4½" (11.43 cm)
13' thru 15' (3.962 m thru 4.57 m)	2	2	4½" (11.43 cm)	5	2	4½" (11.43 cm)	7.5	3*	4½" (11.43 cm)
17' thru 23' (5.182 m thru 7.01 m)	3	2	4½" (11.43 cm)	7.5	3	4½" (11.43 cm)	10	3*	4½" (11.43 cm)

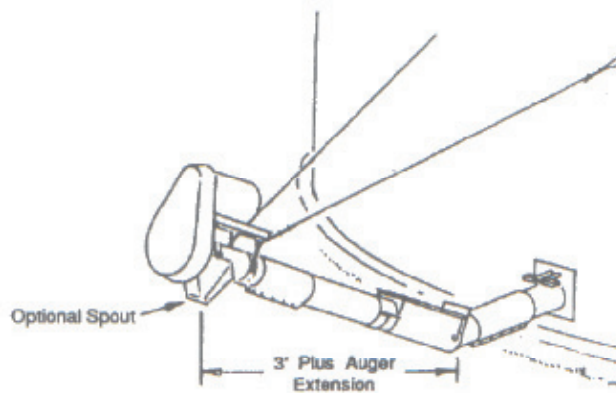
* When used with 8" underbin 10" vertical unit requires only two belts.

Discharge Heads for Variable-Height Inclined Unloading

Variable height inclined discharge heads are available in 6", 8", and 10". Horizontal to Incline transition can step up one auger size, i.e. a 6" horizontal unloading auger can be attached to a 6" or an 8" inclined discharge head. All NECO variable height discharge systems can be inclined from 0° to 25°.

Prices Include

- Modular Discharge Head with Heavy Duty Flighting
- Sealed Self Aligning bearing
- Coupler Box
- Stub auger with U-Joint
- Cable Support Hardware (cable not included)
- E-Z Off Motor Mount
- Drive Kit
- Belt Shield
- Tube size adapter (on units that step up)



Not Included

- Motor and Motor pulley
- ¼" Cable for support
- Auger extension to vary the incline auger length

Manufactured by



Division of GLOBAL Industries, Inc.
9364 No. 45th St. - Omaha, NE 68152
800-367-6208 402-453-6912
www.necousa.com



Discharge Heads For Variable-Height Incline Unloading

Horizontal-to-Incline Size	Part Number	Belts	List Price	Weight	
				lb	kg
6" Horizontal to 6" Incline	047920	1		110	50
6" Horizontal to 6" Incline	048839	2		113	52
6" Horizontal to 8" Incline	047927	2		131	60
8" Horizontal to 8" Incline	047934	2		221	100
8" Horizontal to 8" Incline	048886	3		224	102
8" Horizontal to 10" Incline*	047941	2		262	119
10" Horizontal to 10" Incline	047948	2		234	106
10" Horizontal to 10" Incline	048803	3		237	108
10" Horizontal to 10" Incline	046917	4		252	114

* When stepping up in size from horizontal to incline, underbin tube must be at least 18" longer than the bin radius for clearance of control rods.

Variable-Height Incline Requirements									
Combined Length (Incline and Underbin Augers)	6" Underbin			8" Underbin			10" Underbin		
	hp	Belts	Pulley	hp	Belts	Pulley	hp	Belts	Pulley
Up thru 21'	1.5	1	3.2"	3	2	3.2"	5	2	3.2"
22' thru 30'	2	1	3.2"	3	2	3.2"	5	2	3.2"
31' thru 33'	2	1	3.2"	3	2	3.2"	7.5	3	3.2"
34' thru 36'	3	2	3.2"	3	2	3.2"	7.5	3	3.2"
37' thru 42'	3	2	3.2"	5	2	3.2"	7.5	3	3.2"
43' thru 48	3	2	3.2"	5	2	3.2"	7.5	3	3.2"
49' thru 60'	-	-	-	5	2	3.2"	10	3	4.0"
61 thru 78'	-	-	-	5	2	3.2"	10	3	4.0"

35° Spout with Hardware				
Size	Part Number	List Price	Weight	
			lb	kg
6"	018907		13	6
8"	018909		27	12
10"	018911		41	19

Winch and Cable Kit				
Size	Part Number	List Price	Weight	
			lb	kg
6"	018720		18	8
8"	018722		32	15
10"	047519		46	21

Conversion Table		
' = foot or feet	21' = 6.401 meters	42' = 12.8 meters
" = inch or inches	22' = 6.706 meters	43' = 13.11 meters
	30' = 9.144 meters	48' = 14.63 meters
	31' = 9.449 meters	49' = 14.94 meters
	33' = 10.06 meters	60' = 18.29 meters
3.2" = 8.128 cm	34' = 10.36 meters	61' = 18.59 meters
6" = 15.24 cm	36' = 10.97 meters	78' = 23.77 meters
8" = 20.32 cm	37' = 11.28 meters	
10" = 25.40 cm		



Variable-Height and Dual-Drive Unloading Systems Bill of Lading Items

	Part Number	List Price	Weight		Description	Variable-Height Discharge Page B-9								Dual-Drive Vertical Page B-7						
			lb	kg		047920	048839	047927	047934	048886	047941	047948	048803	046917	047987	048005	048023	047996	048014	
Discharge Heads	047004		32	15	Discharge Head Assembly, 6" Modular	1	1									2			1	
	047005		40	18	Discharge Head Assembly, 8" Modular			1	1	1							2		1	1
	047006		95	43	Discharge Head Assy, 10" Modular						1	1	1	1				2		1
Drive Kits	022600		4	2	Drive Kit, 12" x 1¼", 1-Belt	1														
	022024		6	3	Drive Kit, 12" x 1¼", 2-Belt		1	1	1							2	2		2	1
	022602		10	5	Drive Kit, 12" x 1¼", 3-Belt					1										
	022609		12	6	Drive Kit, 16" x 1½", 2-Belt						1	1						1		1
	022610		15	7	Drive Kit, 16" x 1½", 3-Belt								1					1		
	047156		30	14	Drive Kit, 18.4" x 1½", 4-Belt									1						
Motor Mounts	047917		25	12	E-Z OFF Motor Mount 6"/8"	1	1	1	1	1						2	2		2	1
	047800		25	12	E-Z OFF Motor Mount 10"/12"						1	1	1					2		1
	046150		25	12	E-Z OFF Motor Mount 15-30 hp									1						
Belt Shields	047182		10	5	Belt Shield to 14" Pulleys	1	1	1	1	1						2	2		2	1
	047915		24	11	Belt Shield, 15" to 20" Pulleys						1	1	1	1				2		1
Dual-Drive Verticals	047532		7	3	Outlet, 6" Vert forcefeed boot, flippers											1			1	
	047533		10	5	Outlet, 8" Vert forcefeed boot, flippers												1			1
	047534		15	7	Outlet, 10" Vert forcefeed boot, flippers													1		
	047539		37	17	Boot, 6" Vertical forcefeed boot, flippers											1				
	022931		53	24	Boot, 8" Vertical forcefeed boot, flippers												1		1	
	022348		67	31	Boot, 10" Vert forcefeed boot, flippers													1		1
	047526		5	2	Flange Adaptor, 6-8 vert forcefeed boot														1	
047527		6	3	Flange Adptr, 8-10 vert forcefeed boot															1	
Variable-Height Inclines	047040		26	12	Coupler Box, 6" Variable-Height	1	1													
	047314		31	14	Coupler Box, 8" Variable-Height			1	1	1										
	047315		57	26	Coupler Box, 10" Variable-Height						1	1	1	1						
	047044		13	6	Stub Auger, 6" with U-Joint	1	1	1												
	047320		15	7	Stub Auger, 8" with U-Joint				1	1	1									
	047347		21	10	Stub Auger, 10" with U-Joint							1	1	1						
	047363		6	3	Adaptor, 8" Coupler Box			1												
	047364		7	3	Adaptor, 10" Coupler Box						1									
Vertical Bin Bracket	014527		22	10	6" Adjustable Bin Bracket, Extra Long											1				
	014528		23	10	8" Adjustable Bin Bracket, Extra Long												1		1	
	014529		25	11	10" Adjustable Bin Bracket, Extra Long													1		1
Vertical Discharge Spouts	047528		16	7	Spout, 6" Truck Load with Flipper											1				
	047066		27	12	Spout, 8" Truck Load with Flipper												1		1	
	047529		36	16	Spout, 10" Truck Load with Flipper													1		1



Fixed-Angle Discharge Heads

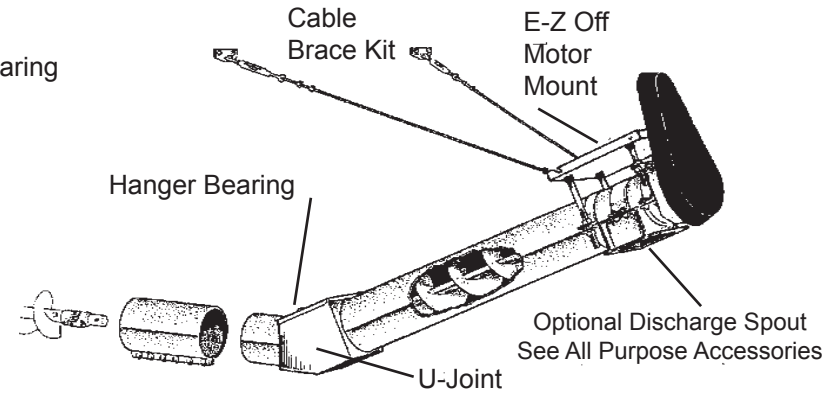
NECO'S Fixed Angle Discharge Heads are designed to give extra height that horizontal units cannot provide. They are ideal for unloading grain into transport augers, roller mills, grinder-mixers, and other equipment. The connection provided by the connecting sleeve (between the underbin tube and the inlet tube) allows adjustments for extra capacity. Cable bracing with turnbuckles is standard.

Prices Include

- Main Unit with Coupler box with Hanger Bearing
- E-Z Off Motor Mount
- Drive Kit & Belt Shield
- Cable Braces
- Stub Auger with U-Joint

Not Included

- 1800 RPM Motor
- 3.2" (8.128 cm) OD Motor Pulley
- Spout

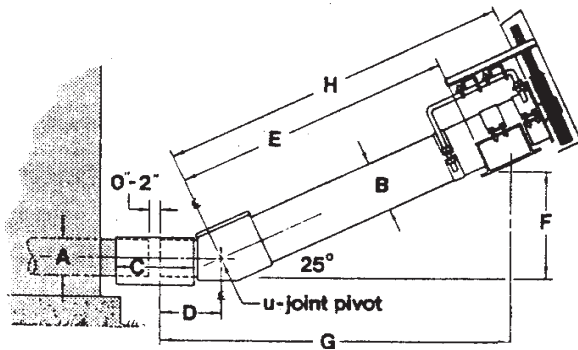


Horizontal-to-Incline Size	Bin Diameter		Electrical Requirements		Belts	Part Number	List Price
	Feet	Meters	hp*	kW			
6" Horizontal to 8" Incline	Up to 21'	Up to 6.401	1½	1.1185	1	018982	
	22'-33'	6.706-10.06	2	1.4913	1	018982	
	34'-48'	10.36-14.63	3	2.2370	2	019751	
8" Horizontal to 10" Incline	Up to 36'	Up to 10.97	3	2.2370	2	019752	
	37' -78'	11.28-23.77	5	3.7284	2	019752	
	Modular Power Sweeps	-	10	7.4569	3	046194	
10" Horizontal to 12" Incline	Up to 30'	Up to 9.144	5	3.7284	3	019753	
	31'-48'	9.449-14.63	7½	5.5927	3	019753	
	49'-78'	14.94-23.77	10	7.4569	3	019754	
	Modular Power Sweeps	-	15	11.1854	4	046920	
12" Horizontal to 12" Incline	Up to 27'	Up to 8.23	7½	5.5927	3	019755	
	28'-42'	8.534-12.8	10	7.4569	3	019756	
	43'-60'	13.11-18.29	15	11.1854	4	019757	

* For Standard unloading systems, see Modular Power Sweep price list for horsepower (hp) requirements with power sweep systems.



Fixed-Angle Discharge Heads (continued)



Dry Corn Capacities		
Auger Diameter	Bushels per Hour (BPH)	Cubic Meters per Hour
6" to 8"	1000	35.24
8" to 10"	2000	70.48
10" to 12"	3500	123.3
12" to 12"	4200	148.0

Motor Capacity		Motor Pulley Size	
hp	kW	inches	cm
Up to 7½	Up to 5.5927	3.2"	8.128
10-15	7.4569-11.1854	4.0"	10.16
20	14.9139	6.0"	15.24

SPECIFICATIONS								
REF	6" - 8"		8" - 10"		10" - 12"		12"	
	Diameter		Diameter		Diameter		Diameter	
	inches	cm	inches	cm	inches	cm	inches	cm
A	6"	15.24 cm	8"	20.32 cm	10"	25.4 cm	12"	30.48 cm
B	8"	20.32 cm	10"	25.4 cm	12"	30.48 cm	12"	30.48 cm
C	12"	30.48 cm	12"	30.48 cm	21"	53.34 cm	27"	53.34 cm
D	12 ¹ / ₈ "	30.8 cm	14 ⁻³ / ₈ "	36.51 cm	19"	48.26 cm	25 ¹ / ₄ "	64.13 cm
E	48"	121.9 cm	46"	116.8 cm	51 ¹ / ₂ "	130.8 cm	51 ¹ / ₂ "	130.5 cm
F	17 ¹ / ₂ "	44.45 cm	17"	43.18 cm	19 ¹ / ₄ "	48.89 cm	19 ¹ / ₄ "	48.89 cm
G	61"	154.9 cm	62"	157.5 cm	72 ¹ / ₄ "	183.5 cm	78 ¹ / ₄ "	198.8 cm
H	60"	152.4 cm	60"	152.4 cm	72"	182.9 cm	72"	182.9 cm



FIXED ANGLE DISCHARGE HEADS

Bill of Lading Items

Part Number	List Price	Description	018982	019751	019752	046194	019753	019754	019755	019756	019757	046920
018919		DB207 6"-8" Fixed-Angle Discharge Assembly	1	1								
018926		DB8207 8"-10" Fixed-Angle Discharge Assembly			1	1						
018933		DB10207 10"-12" Fixed-Angle Discharge Assembly					1	1				1
018940		DB12207 12"-12" Fixed-Angle Discharge Assembly							1	1	1	
046150		E-Z Off Motor Mount 15hp-30hp Only										1
022600		Drive Kit 12" x 1 1/4" 1 Belt	1									
022024		Drive Kit 12" x 1 1/4" 2 Belt		1								
022603		Drive Kit 12" x 1 1/2" 2 Belt			1							
022604		Drive Kit 12" x 1 1/2" 3 Belt				1						
022610		Drive Kit 16" x 1 1/2" 3 Belt					1		1			
047013		Drive Kit 18.4" x 1 1/2" 3 Belt						1		1		
047014		Drive Kit 18.4" x 1 1/2" 4 Belt									1	
047156		Drive Kit 18.4" x 1 1/2" 4-B70 Belt										1
047182		Plastic Shield to 14" Pulleys	1	1	1	1						
047915		Belt Shield to 16"/20" Pulleys					1	1	1	1	1	1
047917		E-Z Off Motor Mount 6"/ 8"	1	1								
047800		E-Z Off Motor Mount 10"/ 12"					1	1	1	1	1	
018960		Box of parts, DB207 Fixed-Angle	1	1								
018968		Box of parts, DB8207 Fixed-Angle			1	1						
018970		Box of parts, DB10207 Fixed-Angle					1	1				1
018983		Box of parts, DB12207 Fixed-Angle							1	1	1	1



DB206E/8206E Electrically-Driven Vertical Unloading System

Power Requirements					
Size		Bin Diameter		Power	
inches	cm	feet	meters	hp	kW
6"	15.24	15'-25'	4.572 - 7.62	3	2.237
6"	15.24	26'-60'	7.925 - 18.29	5	3.729
8"	20.32	15'-60'	4.572 - 18.29	7.5	5.593

Price Includes

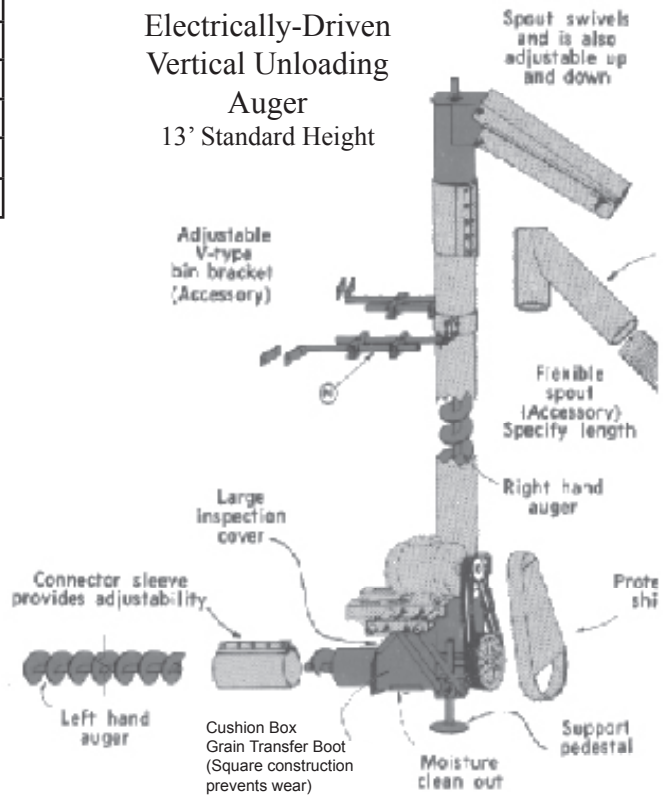
- Underbin Auger
- 13' (3.962 m) Vertical Auger
- Motor Mount
- Drive Shielding Spout
- Drive Kit (motor sprocket included with 8" units)
- Cushion Box Transfer Boot
- Adjustable Bin Bracket
- Connecting Sleeve
- Adjustable or 45° Round Spout

Not Included

- Underbin Tube - Order from page B-15.
- Tube length is half of bin diameter.
- 3.2" (8.128 cm) two-Groove Motor Pulley (6" units)
- Optional Flex Tube

Note these verticals are not part of the modular equipment group. Modular extensions will not work with them.

Electrically-Driven Vertical Unloading Auger 13' Standard Height



Bin Diameter		6" DB206E with Adjustable Spout				6" DB206E with 45° Round Spout			
		Part Number	List Price	Weight		Part Number	List Price	Weight	
Feet	Meters			lb	kg			lb	kg
15	4.572	019578		268	122	019593		266	121
18	5.486	019579		273	124	019594		271	123
21	6.401	019580		278	126	019595		276	125
22	6.706	019581		280	127	019596		278	126
24	7.315	019582		283	129	019597		281	128
25	7.62	019583		285	130	019598		283	129
27	8.23	019584		287	130	019599		285	130
28	8.534	019585		289	131	019600		287	130
30	9.144	019586		292	133	019601		290	132
33	10.06	019587		296	135	019602		294	134
36	10.97	019588		301	137	019603		301	137
42	12.8	019589		317	144	019604		315	143
48	14.63	019590		332	151	019605		331	150
54	16.46	019591		347	158	019606		345	157
60	18.29	019592		362	164	019607		360	163



DB206E/8206E Electrically-Driven Vertical Unloading System

Bin Diameter		8° DB8206E with Adjustable Spout				8° DB8206E with 45° Round Spout			
		Part Number	List Price	Weight		Part Number	List Price	Weight	
Feet	Meters			lb	kg			lb	kg
15	4.572	019620		398	181	019635		395	180
18	5.486	019621		407	185	019636		404	183
21	6.401	019622		415	189	019637		412	187
22	6.706	019623		418	190	019638		415	188
24	7.315	019624		419	190	019639		416	189
25	7.62	019625		420	191	019640		417	189
27	8.23	019626		421	191	019641		418	190
28	8.534	019627		423	192	019642		420	191
30	9.144	019628		427	194	019643		424	193
33	10.06	019629		433	197	019644		430	195
36	10.97	019630		438	199	019645		435	198
42	12.8	019631		449	204	019646		446	203
48	14.63	019632		465	211	019647		462	210
54	16.46	019633		481	218	019648		478	217
60	18.29	019634		507	230	019649		504	229

DB206P/8206P PTO-Driven Inclined Unloading System

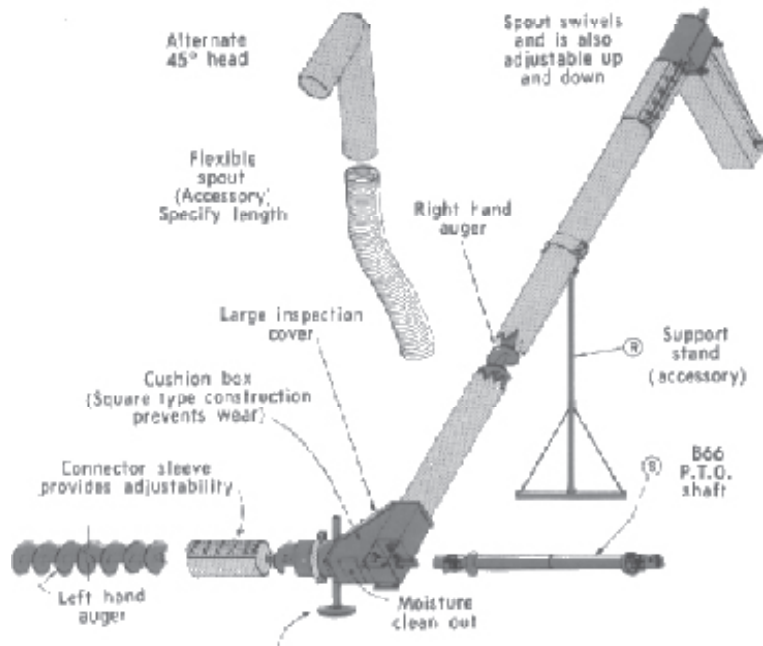
Price Includes

- Underbin Auger
- 19' (5.791 m) Inclined Auger
- Adjustable Spout
- Cushion Box Transfer Boot
- Connecting Sleeve

Not Included

- Underbin Tube - Order from next page. Tube length is half of bin diameter.
- Optional PTO Shaft
- Optional Support Stand

PTO-Driven
Inclined Unloading Auger
19' (5.791 m) Standard
Length





DB206P/8206P PTO-Driven Inclined Unloading System

NOTE: When ordering units to be cast in concrete, order the next size underbin auger and tube. Use X-long adjustable bin brackets.

Bin Diameter		6" DB206P				8" DB8206P			
		Part Number	List Price	Weight		Part Number	List Price	Weight	
				lb	kg			lb	kg
Feet	Meters								
15	4.572	019552		259	118	019565		416	189
18	5.486	019553		264	120	019566		423	192
21	6.401	019554		269	122	019567		430	195
22	6.706	019555		271	123	019568		433	197
24	7.315	019556		274	125	019569		435	198
25	7.62	019557		277	126	019570		436	198
27	8.23	019558		279	127	019571		438	199
28	8.534	019559		281	128	019572		440	200
30	9.144	019560		284	129	019573		444	202
33	10.06	019561		288	131	019574		450	204
36	10.97	019562		292	133	019575		465	211
42	12.8	019563		300	136	019576		466	212
48	14.63	019564		308	140	019577		474	215
54	16.46	019616		320	145	019618		485	220
60	18.29	019617		330	150	019619		495	225

OPTIONAL ACCESSORIES

Support Stand for Inclined Augers					
Size		Part Number	List Price	Weight	
inches	cm			lb	kg
6	15.24	048493		27	13
8	20.32	048494		28	13

Electric Drive Kit (convert from PTO)					
Size		Part Number	List Price	Weight	
inches	cm			lb	kg
6	15.24	019060		100	46
8	20.32	019387		156	71

MANUFACTURED BY



Division of GLOBAL Industries, Inc.
9364 N. 45th Street - Omaha, NE 68152
Phone (402) 453-6912
www.necousa.com



DB206E/8206E
Electrically-Driven Vertical Un-
loading System

and

DB206P/8206P
PTO-Driven
Inclined Unloading System

DB206E with Adjustable Spout Bill of Lading Items Add to Underbin Auger (see chart on next page)		
Description	Part Number	List Price
DB206E 6" x 13' Main Unit Assembly	018010	
Box of Parts, DB206E w/Adj. Spout	018000	
6" Adjustable Bin Bracket Assembly	014253	

DB206E with 45° Spout Bill of Lading Items Add to Underbin Auger (see chart on next page)		
Description	Part Number	List Price
DB206E 6" x 13' Main Unit Assembly	018010	
Box of Parts, DB206E with 45° Spout	018098	
6" Adjustable Bin Bracket Assembly	014253	

DB8206E with Adjustable Spout Bill of Lading Items Add to Underbin Auger (see chart on next page)		
Description	Part Number	List Price
DB8206E 8"x13' Main Unit	018021	
BOP, DB8206E w/Adjustable Spout	018004	
DB8206E Belt Shield	018105	
8" Adjustable Bin Bracket Assembly	014254	
8" Horizontal Stub Auger	018096	
8" Horizontal Stub Tube	018111	
B124 Gear Box with Shaft Cover	047183	

DB8206E with 45° Spout Bill of Lading Items Add to Underbin Auger (see chart on next page)		
Description	Part Number	List Price
DB8206E 8" x 13' Main Unit	018119	
Box of Parts, DB8206E w/45° Spout	019368	
DB8206E Belt Shield	018105	
8" Adjustable Bin Bracket Assembly	014254	
8" Horizontal Stub Auger	018096	
8" Horizontal Stub Tube	018111	
B124 Gear Box with Shaft Cover	047183	

DB206P Bill of Lading Items Add to Underbin Auger (see chart on next page)		
Description	Part Number	List Price
DB206P 6"x19' Main Unit Assembly	018022	
Box of Parts, DB8206P	018002	

DB8206P Bill of Lading Items Add to Underbin Auger (see chart on next page)		
Description	Part Number	List Price
DB8206P 8"x19' Main Unit Assembly	018025	
Box of Parts, DB8206P	018006	
8" Horizontal Stub Auger	018096	
8" Horizontal Stub Tube	018111	
B124 Gear Box with Shaft Cover	047183	

Conversion Table	
6" = 15.24 cm	13' = 3.962 m
8" = 20.32 cm	19' = 5.791 m

Manufactured by



Division of GLOBAL Industries, Inc.
9364 North 45th Street
Omaha, Nebraska 68152



SECTION B - DISCHARGE HEADS

Effective: 2011-11-1
B-18

DB206E/8206E
Electrically-Driven Vertical Un- and
loading System

DB206P/8206P
PTO-Driven
Inclined Unloading System

Bin Diameter		DB206 Underbin Tube		DB206 Underbin Auger		DB8206 Underbin Tube		DB8206 Underbin Auger	
		Part Number	List Price	Part Number	List Price	Part Number	List Price	Part Number	List Price
Feet	Meters								
15	4.572	036429		019355		036493		018063	
18	5.486	036571		018032		036312		018064	
21	6.401	001188		018033		001226		018065	
22	6.706	001189		018035		001227		018067	
24	7.315	001190		018036		001216		018068	
25	7.62	001198		018037		036315		018069	
27	8.23	001192		018039		001217		018070	
28	8.534	036306		018040		036318		018071	
30	9.144	001193		018041		001218		018072	
33	10.06	001199		018043		001220		018074	
36	10.97	001200		018044		001221		018075	
42	12.8	036310		018045		001224		018076	
48	14.63	036311		018046		001225		018077	
54	16.46	036300		019608		036437		019612	
60	18.29	001196		019610		019972		019614	

NOTE: When ordering units to be cast in concrete, order the next size underbin auger and tube. Use X-long adjustable bin brackets.

NOTE: Underbin Tube length is one-half of bin diameter.

Conversion Table	
6" = 15.24 cm	13' = 3.962 m
8" = 20.32 cm	19' = 5.791 m

Manufactured by



Division of GLOBAL Industries, Inc.
9364 North 45th Street
Omaha, Nebraska 68152



Conversion Table				
<p>Length Conversion</p> <p>' = foot or feet " = inch or inches</p> <p>¼" = 0.635 cm ½" = 1.27 cm ¾" = 1.905 cm 1" = 2.54 cm 1¼" = 3.175 cm 1½" = 3.81 cm 1¾" = 4.445 cm 2" = 5.08 cm 3" = 7.62 cm 3.2" = 8.128 cm 4" = 10.16 cm 5" = 12.7 cm 6" = 15.24 cm 7" = 17.78 cm 7½" = 19.05 cm 8" = 20.32 cm 9" = 22.86 cm</p> <p>10" = 25.40 cm 11" = 27.94 cm 12" = 30.48 cm 13" = 33.02 cm 14" = 35.56 cm 15" = 38.10 cm 16" = 40.64 cm 18" = 45.72 cm 18.4" = 46.74 cm</p> <p>20" = 50.8 cm 22" = 55.88 cm 24" = 60.96 cm 27" = 68.58 cm 28" = 71.12 cm 30" = 76.2 cm 30½" = 77.47 cm 32" = 81.28 cm 33" = 83.82 cm 36" = 91.44 cm 43" = 109.2 cm 52" = 132.1 cm 63" = 160 cm</p>	<p>1' = 0.3048 meters 2' = 0.6096 meters 3' = 0.9144 meters 4' = 1.219 meters 4'8" = 1.422 meters 5' = 1.524 meters 6' = 1.829 meters 7' = 2.134 meters 7'6" = 2.286 meters 8' = 2.438 meters 9' = 2.743 meters</p> <p>10' = 3.048 meters 11' = 3.353 meters 12' = 3.658 meters 13' = 3.962 meters 14' = 4.267 meters 15' = 4.572 meters 16' = 4.877 meters 17' = 5.182 meters 18' = 5.486 meters 19' = 5.791 meters</p> <p>20' = 6.096 meters 21' = 6.401 meters 22' = 6.706 meters 23' = 7.01 meters 24' = 7.315 meters 25' = 7.62 meters 26' = 7.925 meters 27' = 8.23 meters 28' = 8.534 meters 29' = 8.839 meters</p> <p>30' = 9.144 meters 31' = 9.449 meters 32' = 9.754 meters 33' = 10.06 meters 34' = 10.36 meters 35' = 10.67 meters 36' = 10.97 meters 37' = 11.28 meters 38' = 11.58 meters 39' = 11.89 meters</p>	<p>40' = 12.19 meters 41' = 12.5 meters 42' = 12.8 meters 43' = 13.11 meters 44' = 31.41 meters 45' = 13.72 meters 46' = 14.02 meters 47' = 14.33 meters 48' = 14.63 meters 49' = 14.94 meters</p> <p>50' = 15.24 meters 51' = 15.54 meters 52' = 15.85 meters 53' = 16.15 meters 54' = 16.46 meters 55' = 16.76 meters 56' = 17.07 meters 57' = 17.37 meters 58' = 17.68 meters 59' = 17.98 meters</p> <p>60' = 18.29 meters 61' = 18.59 meters 62' = 18.9 meters 63' = 19.2 meters 64' = 19.51 meters 65' = 19.81 meters 66' = 20.12 meters 67' = 20.42 meters 68' = 20.73 meters 69' = 21.03 meters</p> <p>70' = 21.34 meters 71' = 21.64 meters 72' = 21.95 meters 73' = 22.25 meters 74' = 22.56 meters 75' = 22.86 meters 76' = 23.16 meters 77' = 23.47 meters 78' = 23.77 meters 79' = 24.08 meters</p>	<p>80' = 24.38 meters 81' = 24.69 meters 82' = 24.99 meters 83' = 25.3 meters 84' = 25.6 meters 85' = 25.91 meters 86' = 26.21 meters 87' = 26.52 meters 88' = 26.82 meters 89' = 27.13 meters</p> <p>90' = 27.43 meters 91' = 27.74 meters 92' = 28.04 meters 93' = 28.25 meters 94' = 28.65 meters 95' = 28.96 meters 96' = 29.26 meters 97' = 29.57 meters 98' = 29.87 meters 99' = 30.18 meters 100' = 30.48 meters</p> <p>101' = 30.78 meters 102' = 31.09 meters 103' = 31.39 meters 104' = 31.7 meters 105' = 32 meters 106' = 32.31 meters 107' = 32.61 meters 108' = 32.92 meters 109' = 33.22 meters 110' = 33.53 meters</p> <p>111' = 33.83 meters 112' = 34.14 meters 113' = 34.44 meters 114' = 34.75 meters 115' = 35.05 meters 116' = 35.36 meters 117' = 35.66 meters 118' = 35.97 meters 119' = 36.27 meters</p>	<p>120' = 36.58 meters 121' = 36.88 meters 122' = 37.19 meters 123' = 37.49 meters 124' = 37.8 meters 125' = 38.1 meters 126' = 38.4 meters 127' = 38.71 meters 128' = 39.01 meters 129' = 39.32 meters</p> <p>Power Conversion</p> <p><u>hp</u> <u>kW</u></p> <p>0.25 = 0.1861 0.5 = 0.3728 0.75 = 0.5593 1 = 0.7456 1.5 = 1.1185 2 = 1.4913 2.5 = 1.8642 2.65 = 1.976 3 = 2.2370 5 = 3.7284 7 = 5.2198 7½ = 5.5927 10 = 7.4569 15 = 11.1854 20 = 14.9139 30 = 22.37 40 = 29.83 50 = 37.28 60 = 44.74</p>

Conversion Factors			
<p>Abbreviations</p> <p>' = foot or feet " = inch or inches</p> <p>lb = pound kg = kilogram</p> <p>cm = centimeter m = meter</p> <p>hp = horsepower kW = kilowatt hz = hertz</p>	<p>Distance and Length</p> <p>centimeter x 0.394 = inches centimeter x 0.03281 = feet meter x 3.281 = feet</p> <p>inches x 2.540 = centimeters feet x 30.48 = centimeters feet x 0.3049 = meters</p>	<p>Weight and Mass</p> <p>pounds x 0.454 = kilogram kilogram x 2.205 = pounds</p>	<p>Power</p> <p>horsepower x 0.746 = kilowatts kilowatts x 1.34 = horsepower</p>



SECTION B - DISCHARGE HEADS

Effective: 2011-11-1
B-20



Manufactured by



Division of GLOBAL Industries, Inc.
9364 North 45th Street
Omaha, Nebraska 68152